

WAAS CH 78018 W23A	APP CRS 229°	Rwy Idg 5000 TDZE 49 Apt Elev 53
--	------------------------	---

RNAV (GPS) RWY 23

SALISBURY-OCEAN CITY WICOMICO RGNL (SBY)

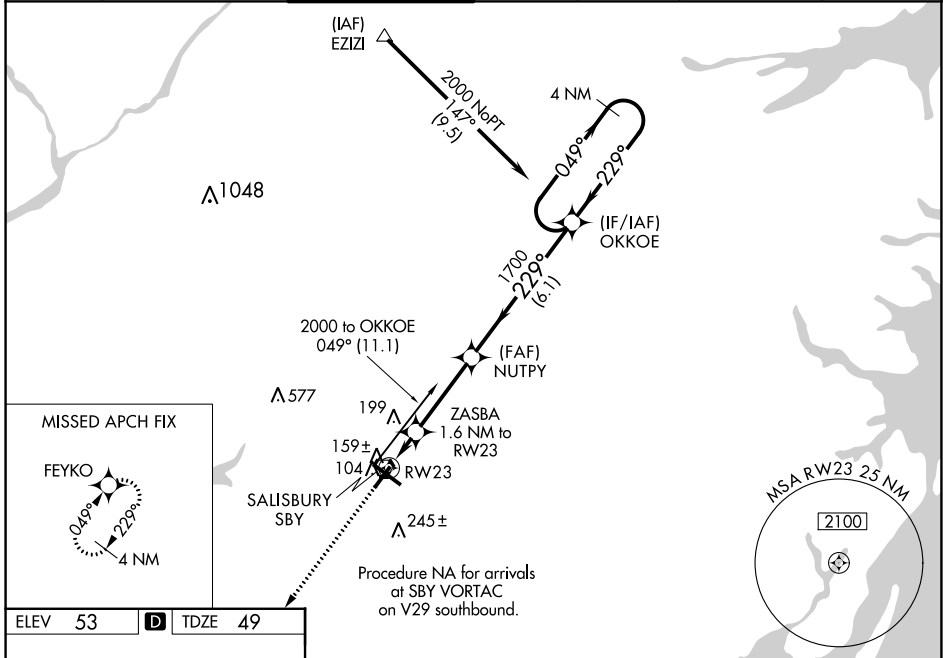
RNP APCH

Baro-VNAV NA when using Georgetown altimeter setting. For uncompensated Baro-VNAV systems, LNAV/VNAV NA below -15°C or above 43°C. Rwy 23 helicopter visibility reduction below ¾ SM NA.

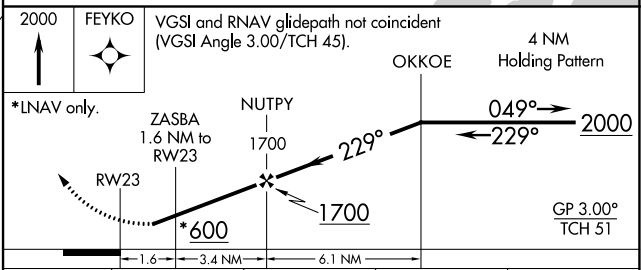
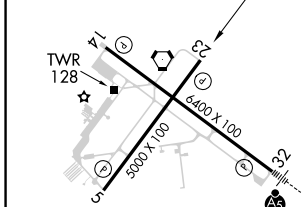
When local altimeter setting not received use Georgetown altimeter setting: increase LPV DA to 426 feet and all Cats visibility ¼ SM; increase LNAV/VNAV DA to 503 feet; increase all MDA 60 feet and LNAV Cat C/D and Circling Cat D visibility ¼ SM.

MISSED APPROACH: Climb to 2000 direct FEYKO and hold.

ASOS 118.325	PATUXENT APP CON ★ 127.95 314.0	SALISBURY TOWER ★ 119.425 (CTAF) 0	GND CON 123.775	CLNC DEL 123.775	CLNC DEL 118.55 (when twr closed)	UNICOM 122.95
------------------------	---	---	---------------------------	----------------------------	--	-------------------------



ELEV 53	D	TDZE 49
---------	----------	---------



CATEGORY	A	B	C	D
LPV DA		374-1	325 (400-1)	
LNAV/VNAV DA		451-1½	402 (400-1½)	
LNAV MDA		420-1	371(400-1)	420-1¼ 371 (400-1¼)
CIRCLING	480-1 427 (500-1)	520-1 467 (500-1)	560-1½ 507 (600-1½)	700-2 647 (700-2)

REIL Rwy 5, 14 and 23 **0**
MIRL Rwy 5-23 **0**
HIRL Rwy 14-32 **0**

NE-3, 03 OCT 2024 to 31 OCT 2024

NE-3, 03 OCT 2024 to 31 OCT 2024