

APP CRS **016°**
 Rwy Idg **10302**
 TDZE **1314**
 Apt Elev **1333**

RNAV (RNP) Z RWY 1L

WICHITA DWIGHT D EISENHOWER NTL (ICT)

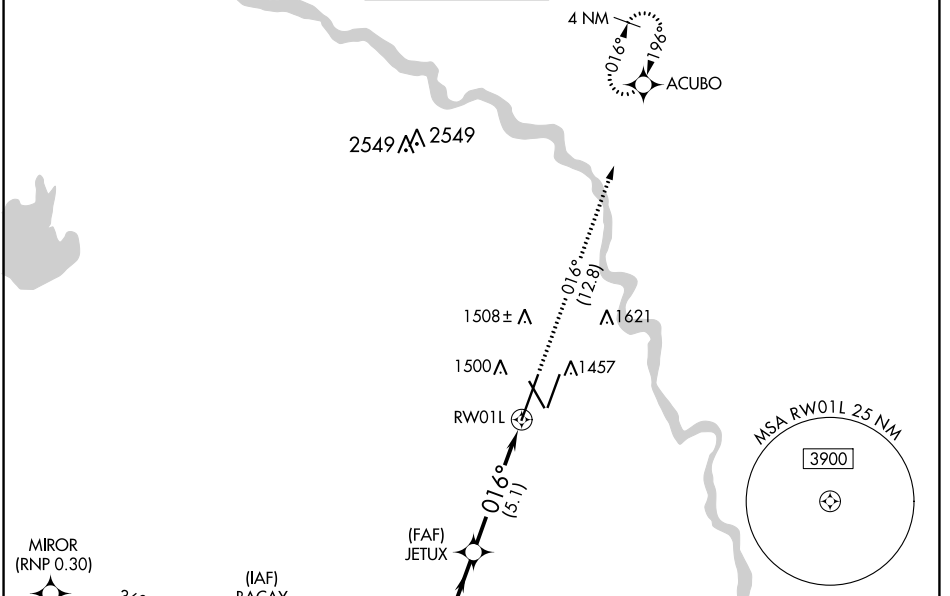
RNP AR APCH

▼ Simultaneous approach authorized. Use of FD or AP providing RNAV track guidance required during simultaneous operations. For uncompensated Baro-VNAV systems, procedure NA below -15°C or above 54°C. For inop ALS, increase RNP 0.15 all Cats visibility to RVR 4500 and RNP 0.30 all Cats visibility to RVR 5500.

ALS-F-2

MISSED APPROACH: Climb to 4200 on track 016° to ACUBO and hold.

ATIS 125.15	WICHITA APP CON 126.7 353.5	WICHITA TOWER 118.2 257.8	GND CON 121.9 348.6	CLNC DEL 125.7
-----------------------	---------------------------------------	-------------------------------------	-------------------------------	--------------------------

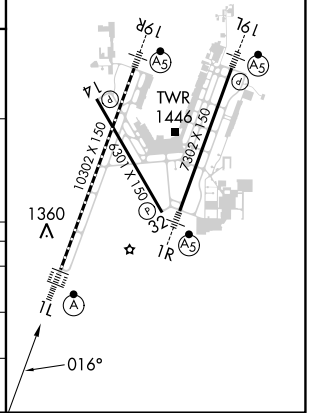
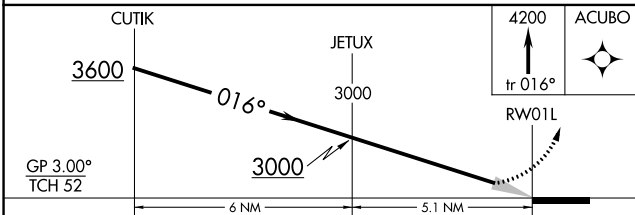


NC-2, 03 OCT 2024 to 31 OCT 2024

NC-2, 03 OCT 2024 to 31 OCT 2024

ELEV 1333 **D** TDZE 1314

HIRL all Rwys
 REIL Rws 14 and 32
 TDZ/CL Rwy 1L



CATEGORY	A	B	C	D
RNP 0.15 DA		1626/28	312 (300-3%)	
RNP 0.30 DA		1676/35	362 (400-3%)	

AUTHORIZATION REQUIRED