

WAAS CH <b>61219</b> <b>W01A</b>	APP CRS <b>016°</b>	Rwy Idg <b>10302</b> TDZE <b>1314</b> Apt Elev <b>1333</b>
--	------------------------	--

# RNAV (GPS) Y RWY 1L

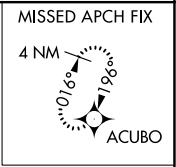
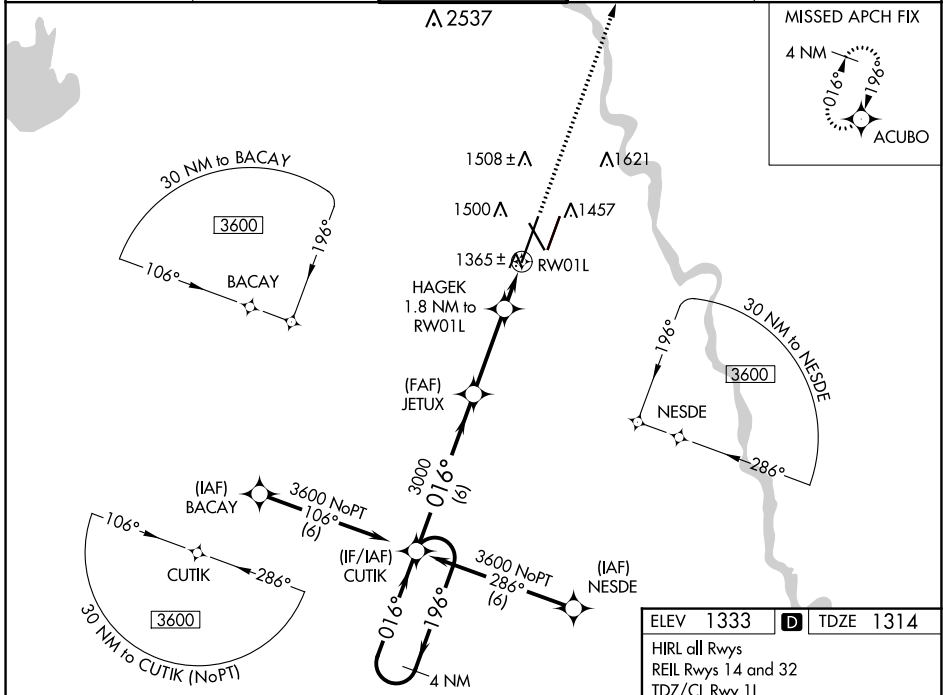
WICHITA DWIGHT D EISENHOWER NTL (ICT)

**⚠** Inoperative table does not apply to LNAV Cat D. For uncompensated Baro-VNAV systems, LNAV/VNAV NA below -15°C (5°F) or above 54°C (130°F). For inoperative ALSF-2, increase LNAV Cat C/D visibility to RVR 4500. DME/DME RNP-0.3 NA. Simultaneous approach authorized with ILS or LOC RWY 1R. LNAV procedure NA during simultaneous operations. Use of FD or AP providing RNAV track guidance required during simultaneous operations.

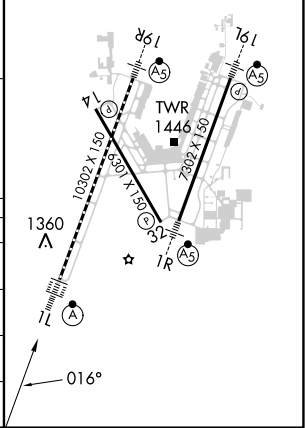
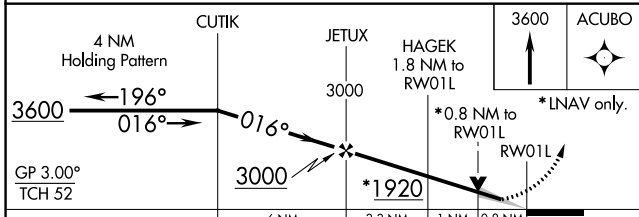
ALSF-2

MISSED APPROACH: Climb to 3600 direct ACUBO and hold.

ATIS <b>125.15</b>	WICHITA APP CON <b>126.7 353.5</b>	WICHITA TOWER <b>118.2 257.8</b>	GND CON <b>121.9 348.6</b>	CLNC DEL <b>125.7</b>
-----------------------	---------------------------------------	-------------------------------------	-------------------------------	--------------------------



ELEV 1333	<b>D</b> TDZE 1314
HIRL all Rwys	
REIL Rws 14 and 32	
TDZ/CL Rwy 1L	



CATEGORY	A	B	C	D
LPV DA		1514/18	200 (200-½)	
LNAV/VNAV DA		1615/24	301 (300-½)	
LNAV MDA		1620/24	306 (300-½)	
<b>C</b> CIRCLING	1800-1	467 (500-1)	1980-1¾ 647 (700-1¾)	1980-2 647 (700-2)

NC-2, 03 OCT 2024 to 31 OCT 2024

NC-2, 03 OCT 2024 to 31 OCT 2024