

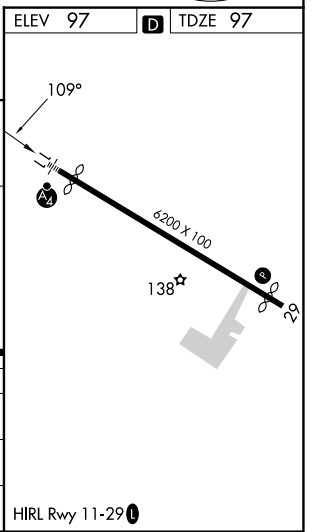
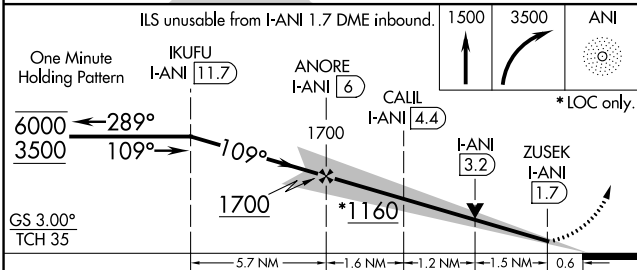
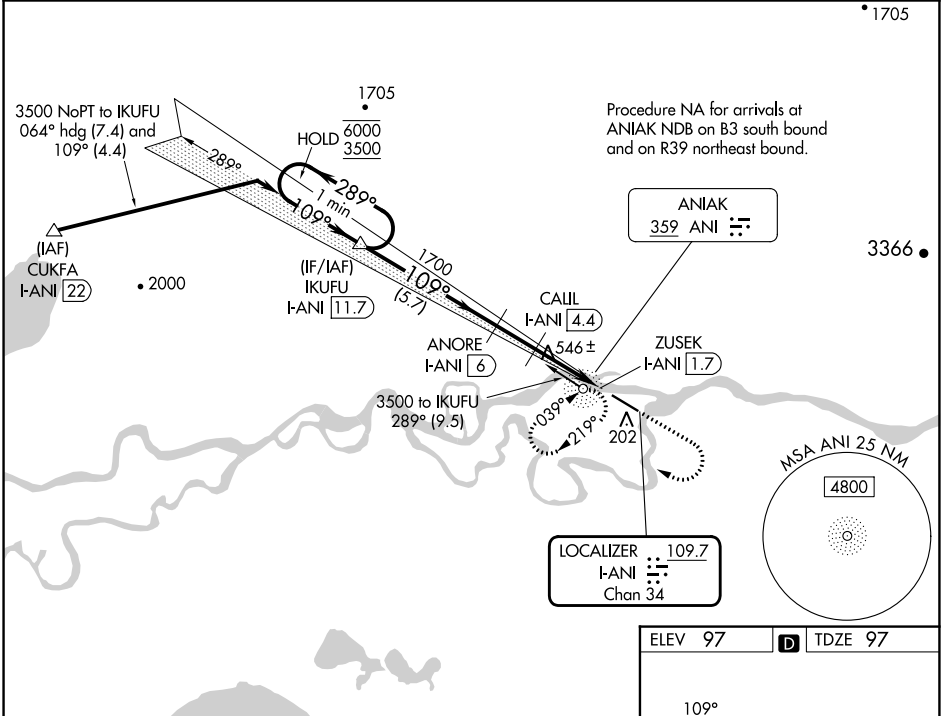
| | | | |
|----------------|-------|----------|-------------|
| LOC/DME | I-ANI | Rwy Idg | 5400 |
| 109.7 | | TDZE | 97 |
| Chan 34 | | Apt Elev | 97 |

APP CRS
109°

ILS or LOC RWY 11

ANIAK (ANI)(PANI)

| | | | |
|--|----------------------|---------------|---|
| DME required. | | MALSF | MISSED APPROACH: Climb to 1500 then climbing right turn to 3500 direct ANI NDB and hold, continue climb-in-hold to 3500. (ADF required) |
| <p>▼ Circling NA north of Rwy 11-29. Rwy 11 helicopter visibility reduction below 3/4 SM NA. Inop table does not apply to S-ILS all Cats.</p> <p>⚠ -37°C</p> | | | |
| AWOS-3P | ANCHORAGE CENTER | CLNC DEL | CTAF |
| 124.3 | 118.15 251.05 | 118.15 | 122.10 |



| CATEGORY | A | B | C | D |
|-------------------|-----------------------|---|---------------------------|----------------------|
| S-ILS 11 | 347-3/4 250 (300-3/4) | | | |
| S-LOC 11 | 800-3/4 703 (800-3/4) | | 800-1 3/4 703 (800-1 3/4) | |
| C CIRCLING | 800-1 703 (800-1) | | 860-2 1/4 763 (800-2 1/4) | 1200-3 1103 (1200-3) |

AK, 05 SEP 2024 to 31 OCT 2024

AK, 05 SEP 2024 to 31 OCT 2024