

COLD BAY, ALASKA

HI-VOR or TACAN RWY 15

VORTAC CDB 112.6 Chan 73	APCH CRS 145°	Rwy Idg 10,179 TDZE 75 Arprt Elev 100
--	-------------------------	--

AL-1241 [USAF]

COLD BAY (CDB) (PACD)

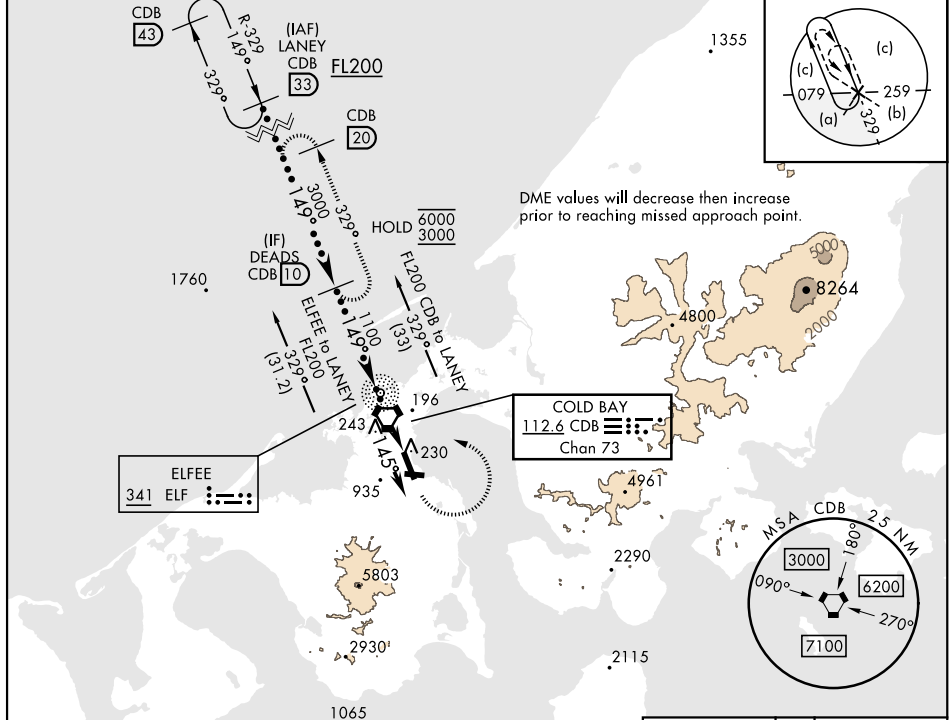
DME required

▼ * When ALS inop, increase vis to 1 3/8 miles.
** Circling not authorized SW of Rwy 15-33.

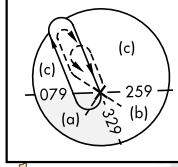


MISSED APPROACH: Climb to 1200, then climbing left turn to 3000 direct CDB VORTAC, then on CDB R-329 to DEADS/CDB 10 DME and hold.

ANCHORAGE CENTER 118.5 278.3	COLD BAY RADIO 123.6 (CTAF) 0	ASOS 135.75
--	---	-----------------------

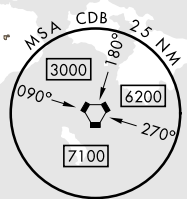


DME values will decrease then increase prior to reaching missed approach point.

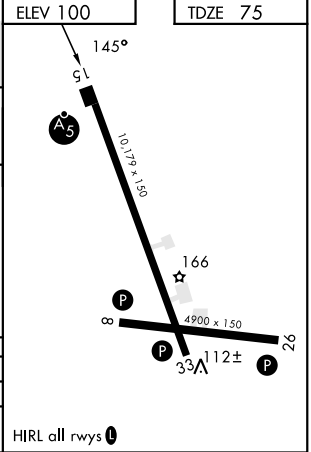
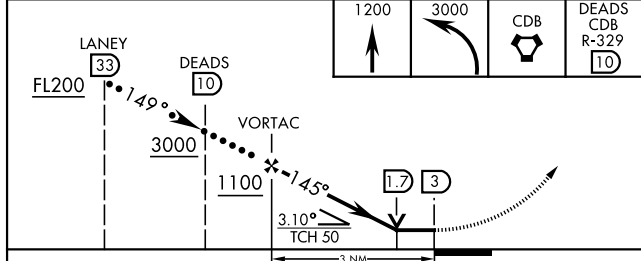


COLD BAY
112.6 CDB
Chan 73

ELFFEE
341 ELF



ELEV 100	TDZE 75
----------	---------



CATEGORY	C	D	E
S-15*	540/50	465	(500-1)
CIRCLING**	560-1 1/2 460 (500-1 1/2)	860-2 1/2 760 (800-2 1/2)	940-3 840 (900-3)

HIRL all rwys 0

COLD BAY, ALASKA 55°12'N-162°44'W COLD BAY (CDB) (PACD)

Amdt 5 02DEC21

HI-VOR or TACAN RWY 15

AK, 05 SEP 2024 to 31 OCT 2024

AK, 05 SEP 2024 to 31 OCT 2024