

ILS or LOC RWY 7L

TED STEVENS ANCHORAGE INTL (ANC)(PANC)

LOC/DME I-TGN 109.9 Chan 36	APP CRS 074°	Rwy Idg 10600 TDZE 128 Apt Elev 151
---	------------------------	--

DME required.

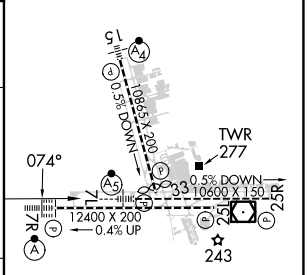
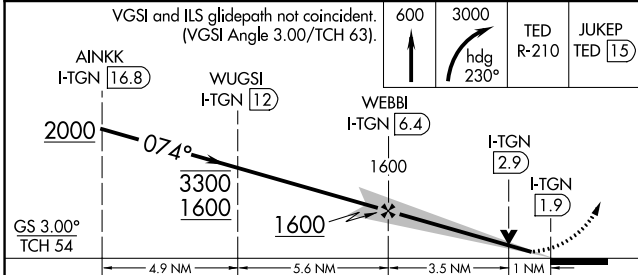
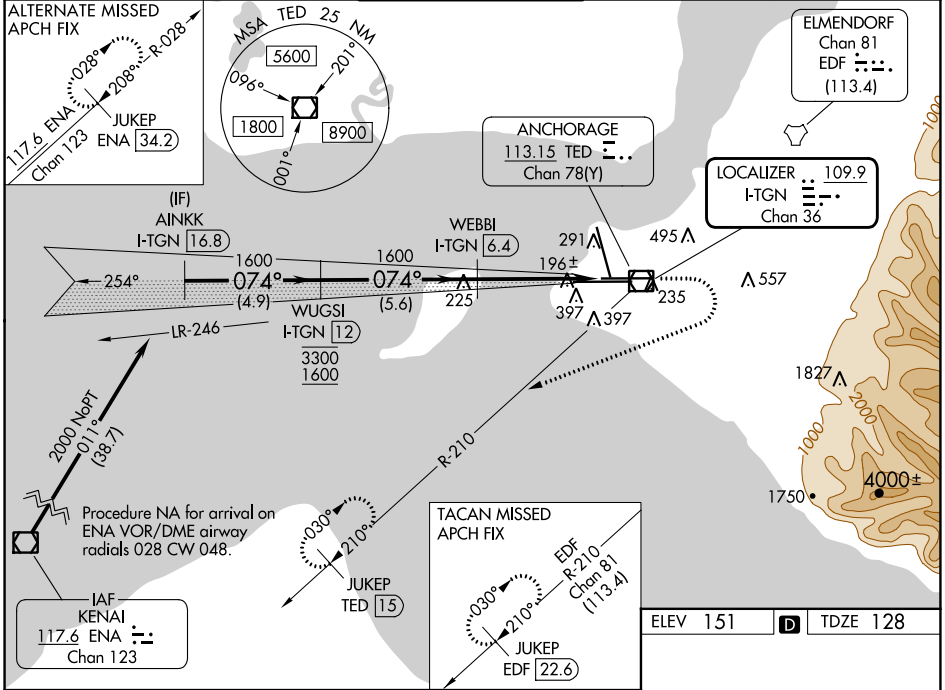
⚠ For inop ALS, increase S-ILS 7L Cat E visibility to RVR 4000, S-LOC 7L Cats C, D and E visibility to RVR 5500.

❄ -21°C

MALSR

MISSED APPROACH: Climb to 600 then climbing right turn to 3000 on heading 230° and TED VOR/DME R-210 to JUKEP/TED 15 DME and hold. (TACAN aircraft climb to 600 then climbing right turn to 3000 on heading 230° on EDF TACAN R-210 to JUKEP/EDF 22.6 DME and hold).

D-ATIS 135.5	ANCHORAGE APP CON 118.6 290.5	ANCHORAGE TOWER 118.3 257.8	GND CON 121.9 338.25	CLNC DEL 119.4 323.1
------------------------	---	---------------------------------------	--------------------------------	--------------------------------



CATEGORY	A	B	C	D	E
S-ILS 7L	328/18 200 (200-½)				
S-LOC 7L	500/24	372 (400-½)	500/30 372 (400-¾)		
C CIRCLING	700-1	549 (600-1)	800-1¾ 649 (700-1¾)	920-2½ 769 (800-2½)	920-2¾ 769 (800-2¾)

REIL Rwy 33
TDZ/CL Rwys 7L and 7R
HIRL all Rwys

ILS or LOC RWY 7L

AK, 05 SEP 2024 to 31 OCT 2024

AK, 05 SEP 2024 to 31 OCT 2024