

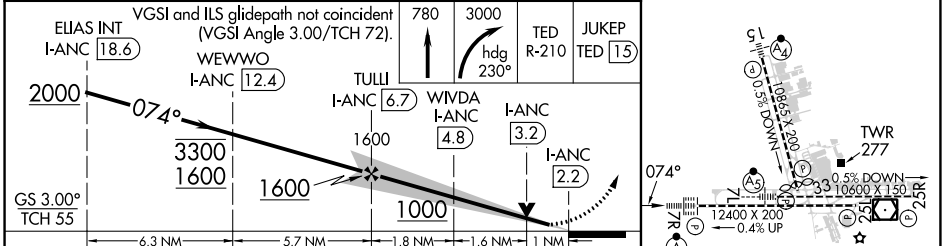
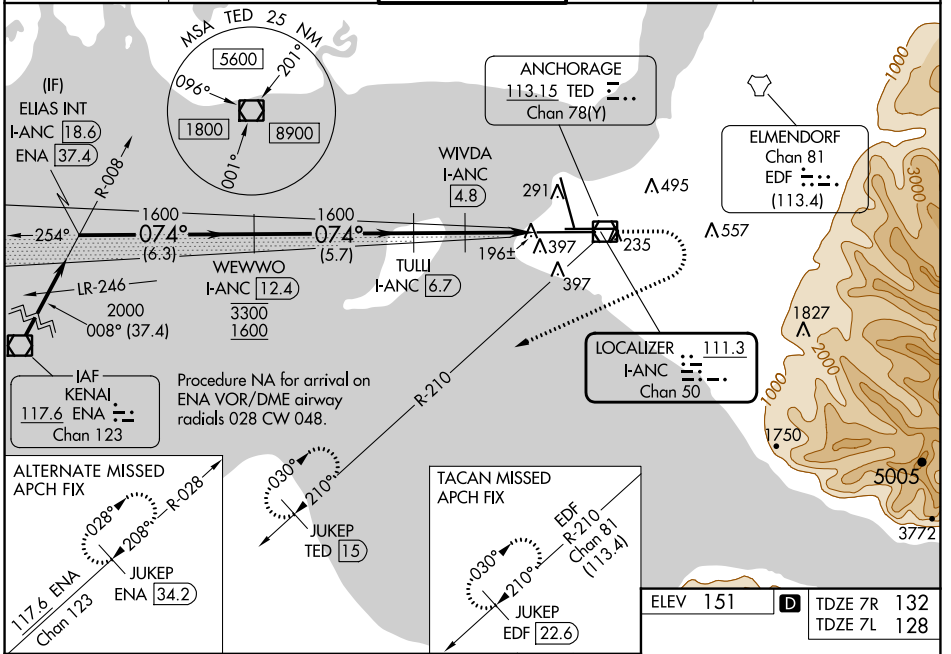
LOC/DME I-ANC 111.3 Chan 50	APP CRS 074°	Rwy ldg 12400	7L 10600
		TDZE 132	128
		Aprt Elev 151	151

ILS or LOC RWY 7R

TED STEVENS ANCHORAGE INTL (ANC) (PANC)

DME required.	MISSED APPROACH: Climb to 780 then climbing right turn to 3000 on heading 230° and on TED VOR/DME R-210 to JUKEP/TED 15 DME and hold. (TACAN aircraft climb to 780 then climbing right turn to 3000 on heading 230° and EDF TACAN R-210 to JUKEP/EDF 22.6 DME and hold).
<p>For inop ALS, increase S-ILS 7R Cat E visibility to RVR 4000, S-LOC 7R Cat E visibility to RVR 6000, and Sidestep Rwy 7L Cat E visibility to 2 SM. Rwy 7L threshold 6140 feet east of Rwy 7R threshold.</p>	<p>ALS F-2 Rwy 7R</p> <p>MALSR Rwy 7L</p>

D-ATIS 135.5	ANCHORAGE APP CON 118.6 290.5	ANCHORAGE TOWER 118.3 257.8	GND CON 121.9 338.25	CLNC DEL 119.4 323.1
------------------------	---	---------------------------------------	--------------------------------	--------------------------------



CATEGORY	A	B	C	D	E
S-ILS 7R	332/18		200 (200-½)		
S-LOC 7R	520/24	388 (400-½)	520/35 388 (400-¾)		
SIDESTEP 7L	520/55		392 (400-1)	520-1½ 392 (400-1½)	
CIRCLING	700-1	549 (600-1)	800-1¾ 649 (700-1¾)	920-2½ 769 (800-2½)	920-2¾ 769 (800-2¾)

REIL Rwy 33
TDZ/CL Rwy 7L and 7R
HIRL all Rwy

AK, 05 SEP 2024 to 31 OCT 2024

AK, 05 SEP 2024 to 31 OCT 2024