

# RNAV (RNP) Z RWY 7R

TED STEVENS ANCHORAGE INTL (ANC) (PANC)

APP CRS	Rwy Idg	<b>12400</b>
<b>074°</b>	TDZE	<b>132</b>
	Apt Elev	<b>151</b>

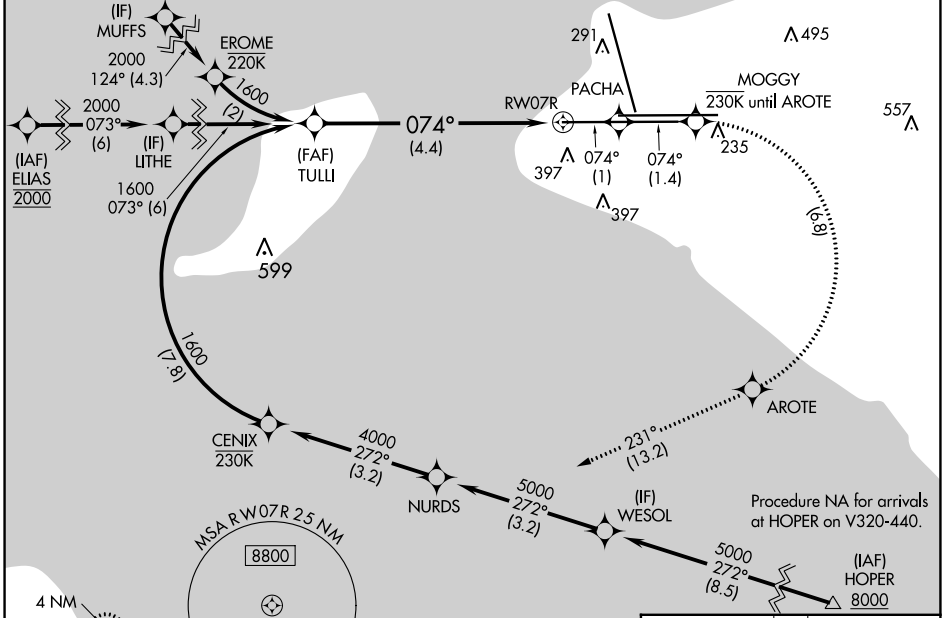
RNP AR APCH, RF required.

**⚠** Missed approach requires RNP less than 1.0.  
**❄** -21°C For uncompensated Baro-VNAV systems, procedure NA below -18°C (0°F) or above 54°C (130°F).  
 For inop ALS, increase RNP 0.30 all Cats visibility to 1 3/8 SM.

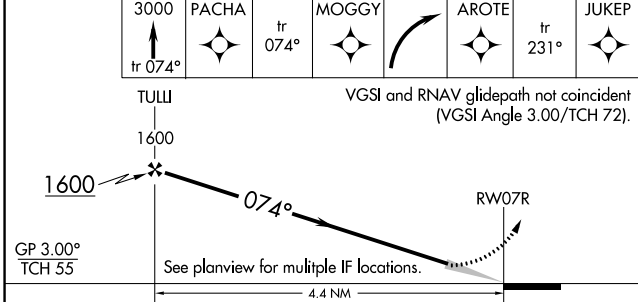
ALSF-2

**⚠** MISSED APPROACH: Climb to 3000 on the missed approach route to JUKEP and hold.

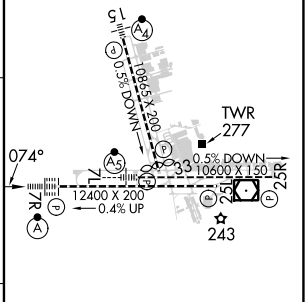
D-ATIS	ANCHORAGE APP CON	ANCHORAGE TOWER	GND CON	CLNC DEL
<b>135.5</b>	<b>118.6 290.5</b>	<b>118.3 257.8</b>	<b>121.9 338.25</b>	<b>119.4 323.1</b>



**RADAR REQUIRED**



ELEV 151	<b>D</b> TDZE 132
----------	-------------------



CATEGORY	A	B	C	D
RNP 0.30 DA	562/50 430 (500-1)			

## AUTHORIZATION REQUIRED

REIL Rwy 33  
 TDZ/CL Rwys 7L and 7R  
 HIRL all Rwys

AK, 05 SEP 2024 to 31 OCT 2024

AK, 05 SEP 2024 to 31 OCT 2024