

(FALCO.FALCO5) 23334

FALCO FIVE ARRIVAL

AL-1729 (FAA)

EIELSON AFB (PAEI)
FAIRBANKS, ALASKA

ANCHORAGE CENTER
133.1 285.4
FAIRBANKS APP CON
127.1 251.1
ATIS*
119.9 273.5
GND CON
121.8 275.8
EIELSON TOWER*
127.2 352.05

CABIN
FL210
17000 (87)

RELMY
FL190
12000 (65)

APPEL
17000
14000

SOWAH
15000
12000 (45)

TIRNE
13000
12000 (50)

BNGAL
11000 (28)

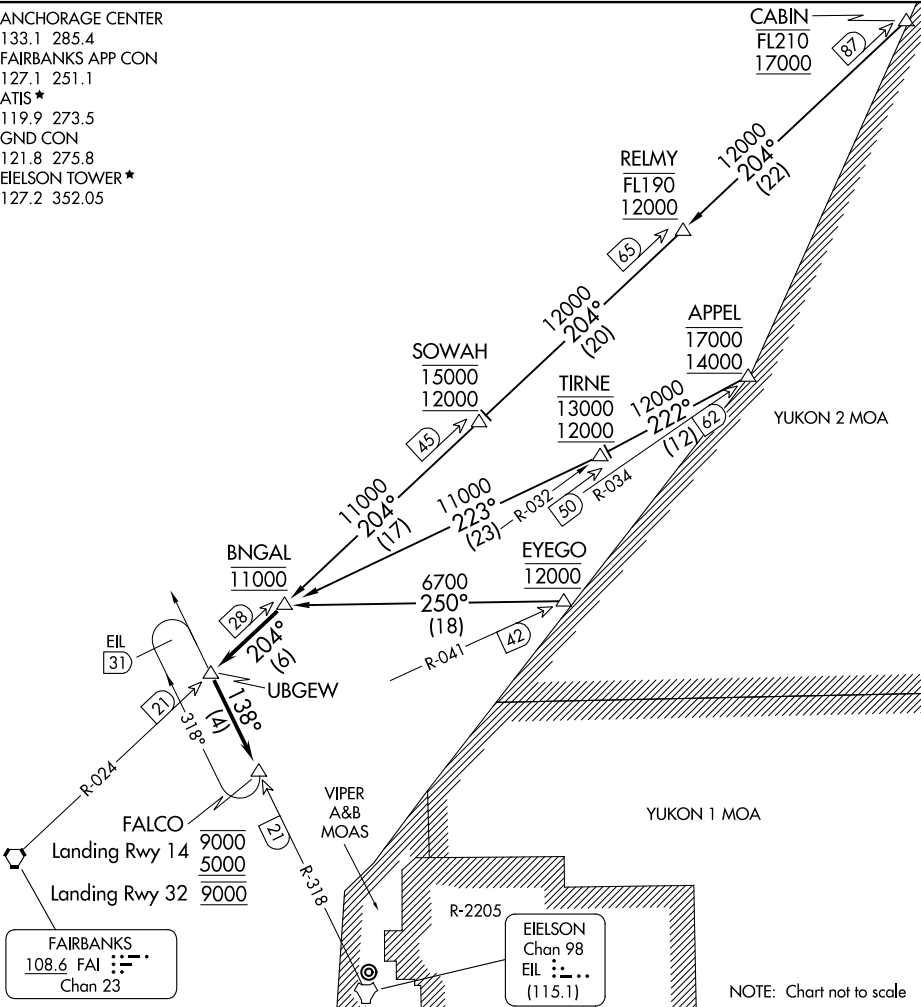
EYEGO
12000 (42)

EIL
31 (21)

FALCO
Landing Rwy 14 9000
Landing Rwy 32 5000
9000

VIPER
A&B
MOAS

EIELSON
Chan 98
EIL :... (115.1)



AK, 05 SEP 2024 to 31 OCT 2024

AK, 05 SEP 2024 to 31 OCT 2024

NOTE: Chart not to scale

ARRIVAL ROUTE DESCRIPTION

APPEL TRANSITION (APPEL.FALCO5): From over APPEL/FAI 62 DME via heading 222° to TIRNE/FAI 50 DME then via heading 223° to BNGAL/FAI 28 DME. Thence. . .

CABIN TRANSITION (CABIN.FALCO5): From over CABIN/FAI 87 DME via FAI R-024 to BNGAL/FAI 28 DME. Thence. . .

EYEGO TRANSITION (EYEGO.FALCO5): From over EYEGO/FAI 42 DME via heading 250° to BNGAL/FAI 28 DME. Thence. . .

. . . via FAI R-024 to UBGEW/FAI 21 DME and EIL R-318 to FALCO/EIL 21 DME. Expect IFR or VFR recovery clearance at BNGAL. Landing Rwy 14 cross FALCO at or below 9000 and at or above 5000. Landing Rwy 32 cross FALCO at 9000.

FALCO FIVE ARRIVAL

(FALCO.FALCO5) 31MAY12

FAIRBANKS, ALASKA
EIELSON AFB (PAEI)