

FAIRBANKS, ALASKA

ILS Y or LOC/DME Y RWY 32

LOC I-FAF 109.9	APCH CRS 320°	Rwy lgt 14,530 TDZE 548 Arprt Elev 548
---------------------------	-------------------------	---

AL-1729 [USAF]

EIELSON AFB (PAEI)

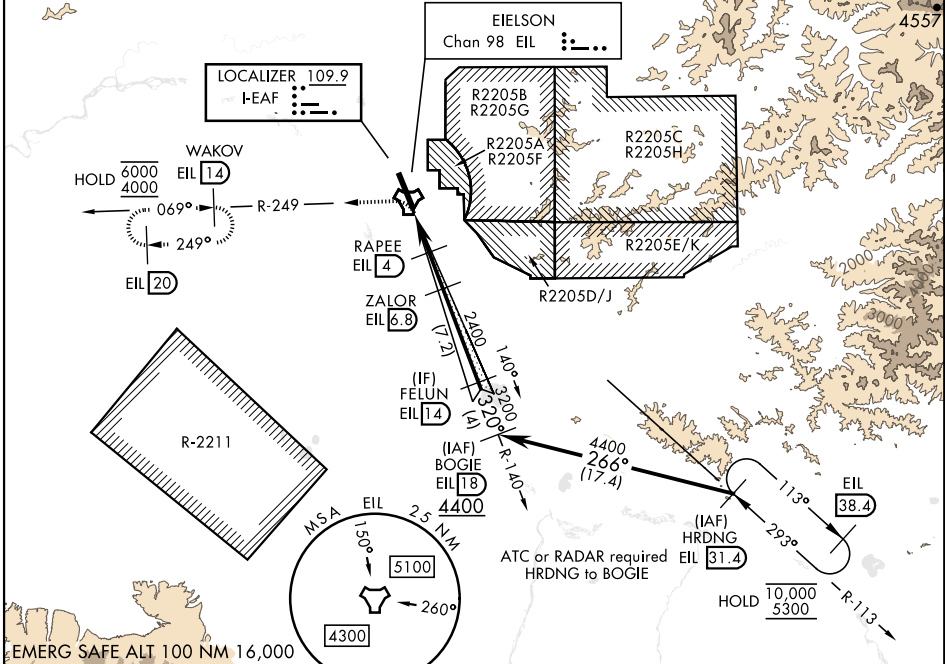
▼ * When ALS inop, increase RVR to 40 and vis to ¼ mile.
 ** When ALS inop, increase CAT AB RVR to 55, vis to 1 mile; CAT CDE RVR to 60, vis to 1½ mile.



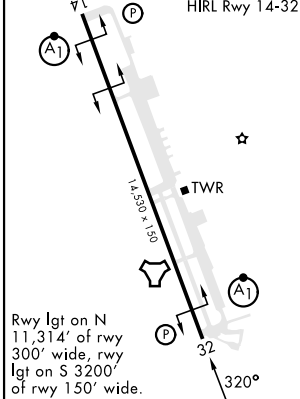
MISSED APPROACH: Climbing left turn on EIL R-249 to 4000 to WAKOV and hold. Continue climb-in-hold.

ATIS ★ 119.9 273.5	FAIRBANKS APP CON 127.1 251.1 360° - 179° 125.35 363.2 180° - 359°	TOWER ★ 127.2 352.05	GND CON 121.8 275.8	CLNC DEL 343.7
------------------------------	--	--------------------------------	-------------------------------	--------------------------

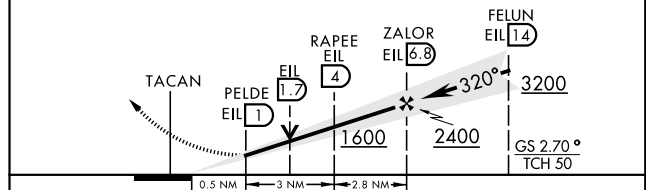
*** Circling not authorized E of Rwy 14-32.
 Missed approach requires the use of RNAV or ATC RADAR monitoring.



ELEV 548	TDZE 548
-----------------	-----------------



VGSI and ILS glidepath not coincident (VGSI angle 2.70/TCH 44).



CATEGORY	A	B	C	D	E
S-ILS 32*	748/24 200 (200-½)				
S-LOC 32**	960/24	412 (500-½)	960/40	412	500-¾
CIRCLING ***	1000-1 452 (500-1)	1040-1 492 (500-1)	1040-1½ 492 (500-1½)	1280-2¼ 732 (800-2¼)	1280-2½ 732 (800-2½)

FAIRBANKS, ALASKA
 Orig 15JUN23

64° 40' N - 147° 06' W

EIELSON AFB (PAEI)

ILS Y or LOC/DME Y RWY 32

AK, 05 SEP 2024 to 31 OCT 2024

AK, 05 SEP 2024 to 31 OCT 2024