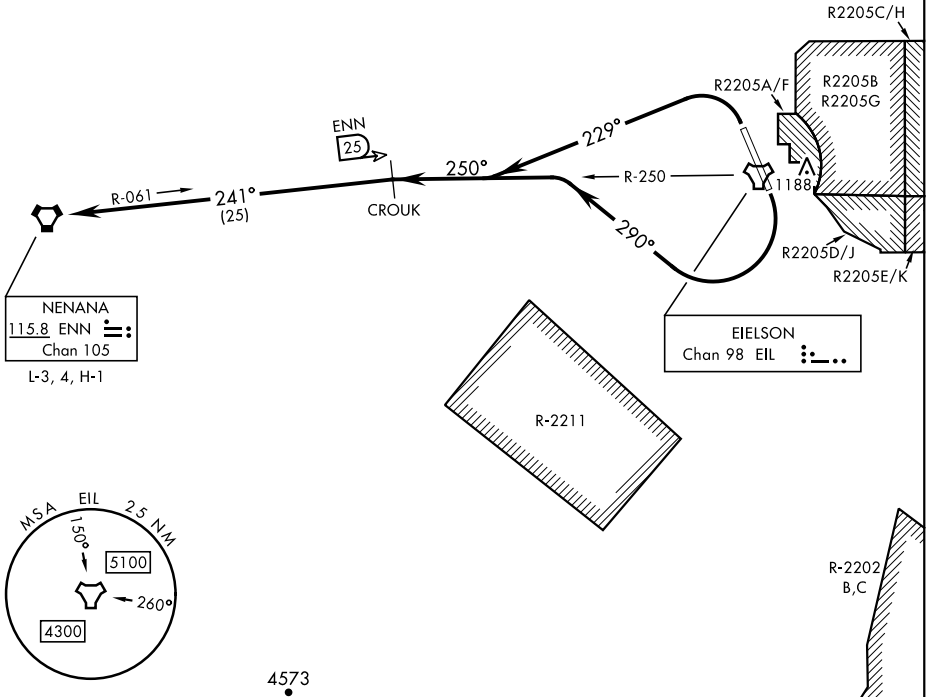


# NENANA SIX DEPARTURE (NENNA6•ENN)

ATIS ★ 119.9 273.5  
 CLNC DEL 343.7  
 GND CON 121.8 275.8  
 TOWER ★ 127.2 352.05  
 FAIRBANKS DEP CON 127.1 251.1

AL-1729 [USAF]

CAUTION: Mountainous terrain  
 East of Eielson AFB and South  
 of departure route.



AK, 05 SEP 2024 to 31 OCT 2024

AK, 05 SEP 2024 to 31 OCT 2024

4573



## DEPARTURE ROUTE DESCRIPTION

TAKEOFF RWY 14: Turn right heading 290° to intercept EIL TACAN R-250 outbound to CROUK and climb to assigned altitude, thence...

TAKEOFF RWY 32: Turn left heading 229° to intercept EIL TACAN R-250 outbound to CROUK and climb to assigned altitude, thence...

...intercept ENN VORTAC R-061 inbound to NENANA then via assigned route.

# NENANA SIX DEPARTURE (NENNA6•ENN)

Orig 15JUN23