

CAPE NEWENHAM, ALASKA

# RNAV (GPS) RWY 15

APCH CRS	Rwy Idg	3945
172°	TDZE	456
	Arprt Elev	531

- (USAF)

CAPE NEWENHAM LRRS (PAEH)

RNP APCH	MISSED APPROACH: Climbing right turn to 3500 direct WAGEN and hold.
----------	---

ANCHORAGE CENTER 124.2 251.1	RADIO 126.2 (CTAF)
---------------------------------	-----------------------

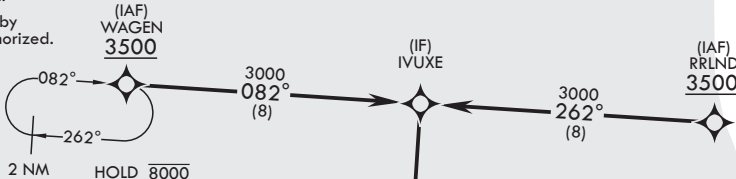
Straight-in Rwy 15 at night, operational VGSI required, remain on or above VGSI glidepath until threshold.

USAF Only: When VGSI inop, straight-in Rwy 15 authorized at night with command approval.

Visibility reduction by helicopters not authorized.

**CAUTION:**

- Rwy located on slope of 2306' mountain. High terrain both sides and S end of rwy.
- Successful go-around improbable if initiated past the MAP.



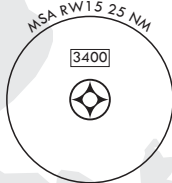
Unlit terrain 235' MSL, 200' from threshold, 200' left of course.

Uncontrolled Airspace below 700' AGL within 7 NM of Cape Newenham airport.

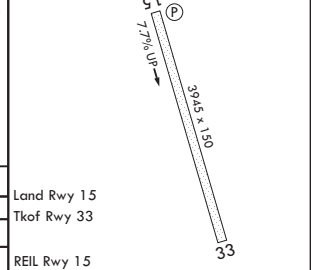
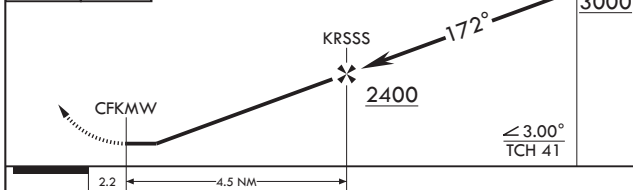
## NOT FOR CIVIL USE

## MILITARY CERTIFIED AIRCREWS OR AUTHORIZED CONTRACT AIRCRAFT ONLY

EMERG SAFE ALT 100 NM 7100



3500	WAGEN	VGSI and descent angles not coincident (VGSI Angle 3.00°/TCH 45).	IVUXE	ELEV 531	TDZE 456
------	-------	---	-------	----------	----------



CATEGORY	A	B	C	D	Land Rwy 15
LNAV MDA	1260-3	804	(800-3)	NA	Tkof Rwy 33
CIRCLING	NOT AUTHORIZED				REIL Rwy 15

CAPE NEWENHAM, ALASKA

58°39'N - 162°04'W

CAPE NEWENHAM LRRS (PAEH)

Amdt 4 25JAN24

# RNAV (GPS) RWY 15

AK, 05 SEP 2024 to 31 OCT 2024

AK, 05 SEP 2024 to 31 OCT 2024