

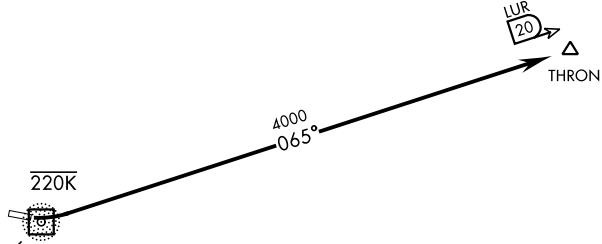
CAPE LISBURNE EIGHT DEPARTURE (OBSTACLE) (LUR8.THRON)


CAPE LISBURNE, ALASKA

ANCHORAGE CENTER DEP CON
119.65 363.25
KOTZEBUE RADIO
122.3
CTAF 
126.2

[USAF]

MILITARY CERTIFIED
AIRCREWS OR AUTHORIZED
CONTRACT AIRCRAFT ONLY
NOT FOR CIVIL USE
NIGHT OPERATIONS NOT AUTHORIZED.



CAPE LISBURNE
385 LUR 
Chan 20(Y)

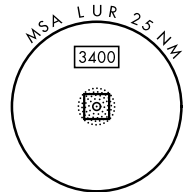
CAUTION: For Rwy 9, do not exceed 220 KIAS until intercepting LUR 065°

Procedure not authorized for CAT DE aircraft.

Uncontrolled airspace below 700' AGL within 7 NM of Cape Lisburne airport.

WARNING: High terrain within 2 NM of DER requiring prompt compliance with departure procedure instructions, do not delay start of initial turn.

2142 



DEPARTURE ROUTE DESCRIPTION

TAKEOFF RWY 9: Turn left within 1/2 mile of departure end and intercept LUR 065° outbound to THRON. Maintain 4000 or ATC assigned altitude.

TAKEOFF RWY 27: Not authorized.