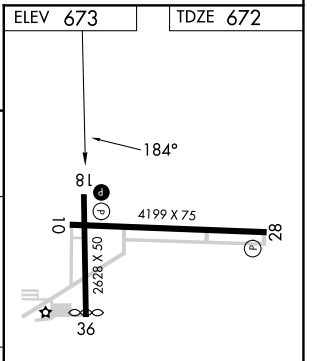
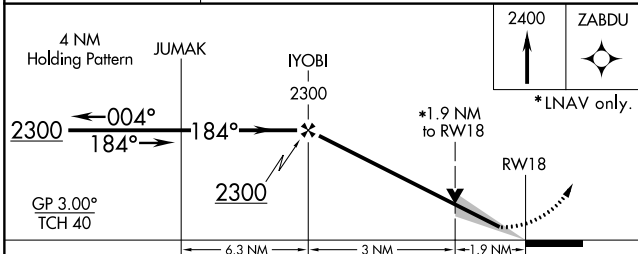
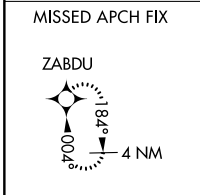
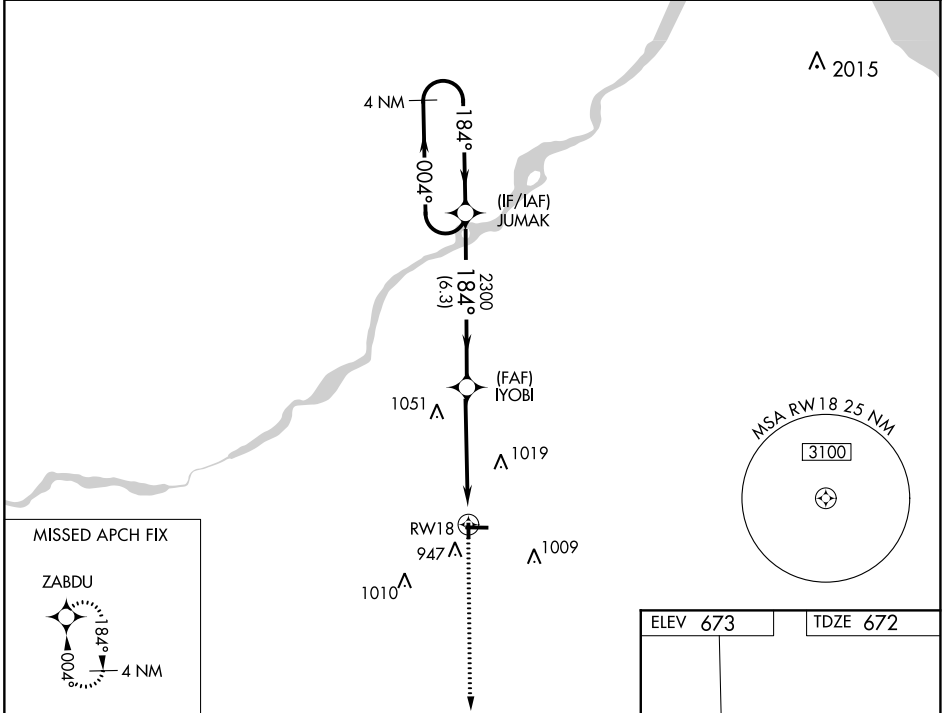


WAAS CH <b>97403</b> <b>W18A</b>	APP CRS <b>184°</b>	Rwy Idg <b>2628</b> TDZE <b>672</b> Apt Elev <b>673</b>
--	------------------------	---

# RNAV (GPS) RWY 18

WOOD COUNTY (1G~~0~~)

RNP APCH.			MISSED APPROACH: Climb to 2400 direct ZABDU and hold.
<p><b>▼</b> Circling Rwy 36 NA at night. VDP NA when using Toledo Express altimeter setting. When local altimeter setting not received, use Toledo Express altimeter setting and increase DA to 957 feet; increase all MDAs 40 feet.</p> <p><b>▲</b> NA</p>			
AWOS-3 <b>120.725</b>	TOLEDO APP CON <b>126.1 317.55</b>	CLNC DEL <b>125.6</b>	UNICOM <b>122.975</b> (CTAF) <b>0</b>



CATEGORY	A	B	C	D
LPV DA	922-1	250 (300-1)		NA
LNAV MDA	1320-1	648 (700-1)		NA
<b>C</b> CIRCLING	1320-1	647 (700-1)		NA

REIL Rwys 10, 18 and 28 **0**  
MIRL Rwys 10-28 and 18-36 **0**

EC-2, 03 OCT 2024 to 31 OCT 2024

EC-2, 03 OCT 2024 to 31 OCT 2024