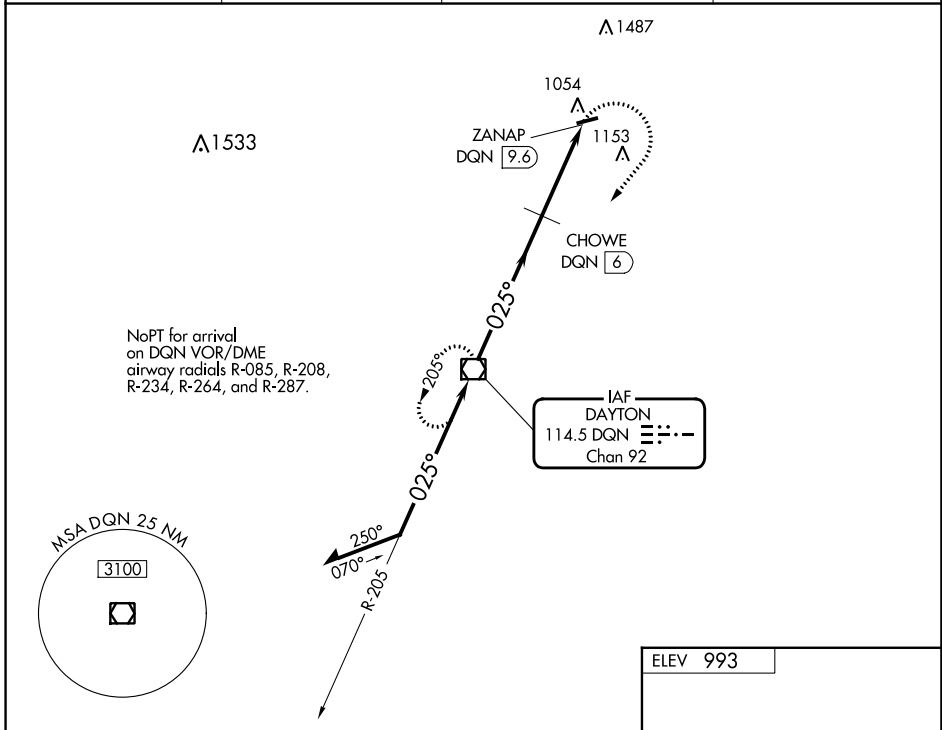


VOR/DME DGN <b>114.5</b> Chan <b>92</b>	APP CRS <b>025°</b>	Rwy Idg TDZE Apt Elev <b>N/A</b> <b>N/A</b> <b>993</b>
---	------------------------	---

**VOR-A**  
PIQUA/HARTZELL FLD (I17)

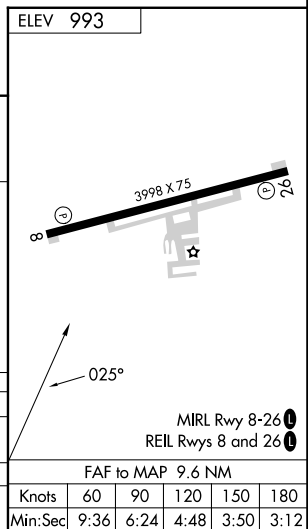
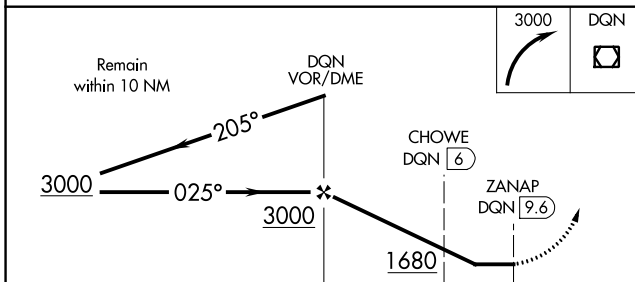
<b>▽</b> <b>▲</b> NA	Use James M Cox Dayton Intl altimeter setting.	MISSED APPROACH: Climbing right turn to 3000 direct DGN VOR/DME and hold.
-------------------------	--	---

DAY ASOS <b>125.8</b>	VES AWOS-3T <b>125.9</b>	COLUMBUS APP CON <b>134.45 294.5 352.05</b>	UNICOM <b>123.0</b> (CTAF) <b>0</b>
--------------------------	-----------------------------	--	--



EC-2, 03 OCT 2024 to 31 OCT 2024

EC-2, 03 OCT 2024 to 31 OCT 2024



CATEGORY	A	B	C	D
<b>☐</b> CIRCLING	1680-1 687 (700-1)	1680-2 687 (700-2)	1880-3 887 (900-3)	
CHOWE FIX MINIMUMS (DME REQUIRED)				
<b>☐</b> CIRCLING	1500-1 507 (600-1)	1560-1 567 (600-1)	1560-1½ 567 (600-1½)	1880-3 887 (900-3)

FAF to MAP 9.6 NM					
Knots	60	90	120	150	180
Min:Sec	9:36	6:24	4:48	3:50	3:12