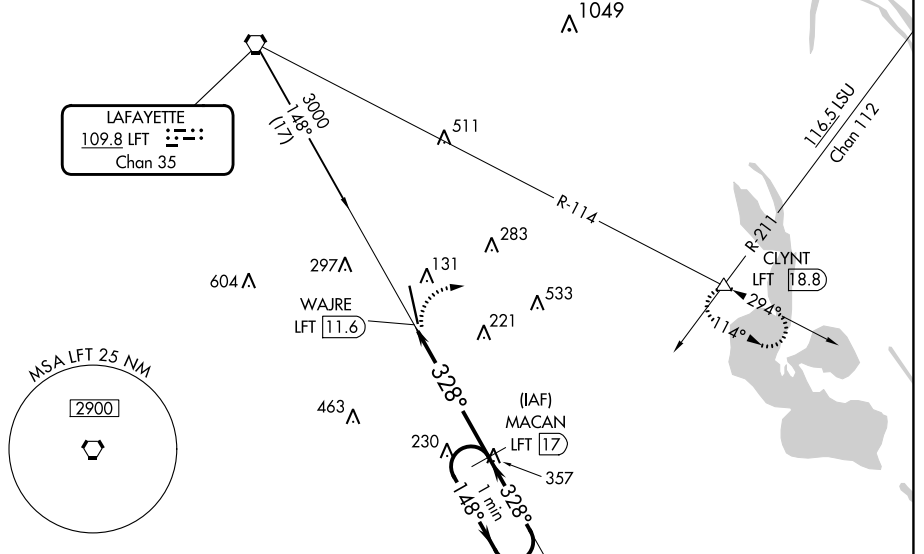


VORTAC LFT 109.8	APP CRS 328°	Rwy Idg TDZE Apt Elev	8002 21 24
Chan 35			

VOR RWY 35
ACADIANA RGNL (A.R.A.)

<p>Circling NA to Rwy's 17W and 35W. DME required. Inop table does not apply.</p>		<p>MALS</p>	<p>MISSED APPROACH: Climbing right turn to 2000 on heading 080° and LFT R-114 to CLYNT INT/LFT 18.8 DME and hold.</p>				
ASOS 133.325	LAFAYETTE APP CON * 121.1 268.7	ACADIANA TOWER * 125.0 (CTAF) 239.3	GND CON 121.7	CLNC DEL 121.7	CLNC DEL 118.05 (when twr closed)	UNICOM 122.95	0 * 122.7

DME REQUIRED



SC-4, 03 OCT 2024 to 31 OCT 2024

SC-4, 03 OCT 2024 to 31 OCT 2024

ELEV 24	D	TDZE 21
HIRL Rwy 16-34		
Seaway Rwy 16W-34W		

2000	LFT R-114	CLYNT	One Minute Holding Pattern																				
328°		148°																					
328°		180°																					
<table border="1"> <tr> <th>CATEGORY</th> <th>A</th> <th>B</th> <th>C</th> <th>D</th> <th>E</th> </tr> <tr> <td>S-35</td> <td>540-1/2</td> <td>519 (600-1/2)</td> <td>540-1 3/8</td> <td>519 (600-1 3/8)</td> <td></td> </tr> <tr> <td> CIRCLING</td> <td>540-1</td> <td>516 (600-1)</td> <td>600-1 1/2 576 (600-1 1/2)</td> <td>680-2 656 (700-2)</td> <td>900-3 876 (900-3)</td> </tr> </table>	CATEGORY	A	B	C	D	E	S-35	540-1/2	519 (600-1/2)	540-1 3/8	519 (600-1 3/8)		CIRCLING	540-1	516 (600-1)	600-1 1/2 576 (600-1 1/2)	680-2 656 (700-2)	900-3 876 (900-3)					
CATEGORY	A	B	C	D	E																		
S-35	540-1/2	519 (600-1/2)	540-1 3/8	519 (600-1 3/8)																			
CIRCLING	540-1	516 (600-1)	600-1 1/2 576 (600-1 1/2)	680-2 656 (700-2)	900-3 876 (900-3)																		