

FORT JOHNSON, LOUISIANA

RNAV (GPS) RWY 16

APCH CRS	Rwy ldg	3913
158°	TDZE	328
	Arprt Elev	330

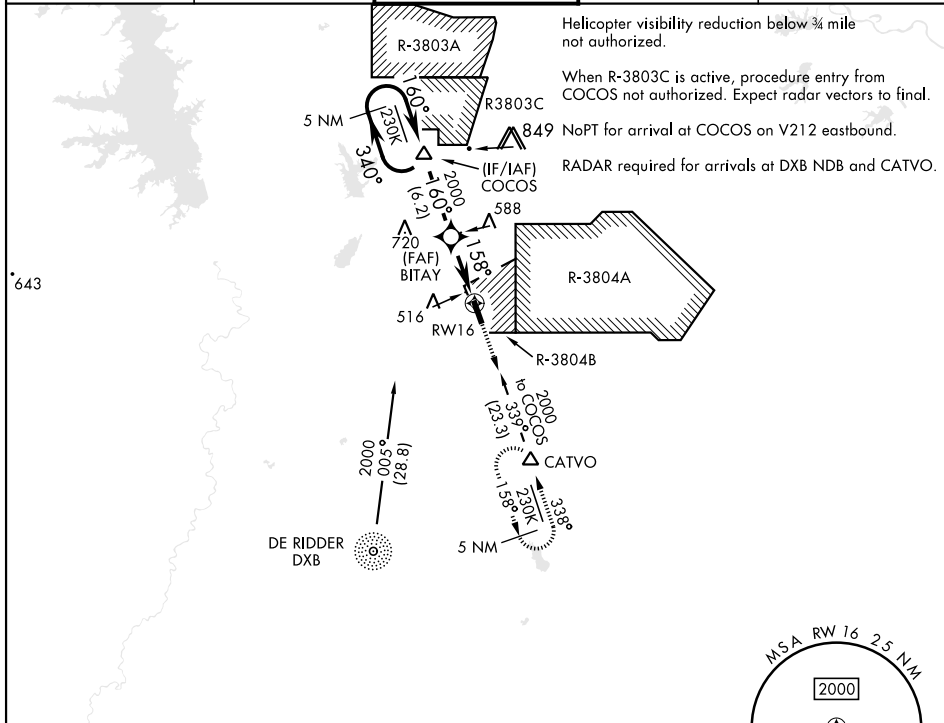
[USA]

MAKS AAF (KPOE)

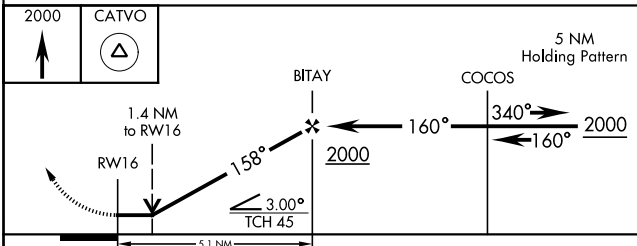
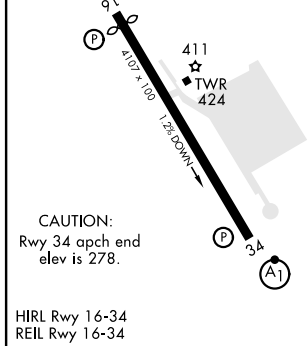
RNP APCH - GPS

MISSED APPROACH: Climb to 2000 direct CATVO and hold.

ATIS 134.85 282.2	APP CON 123.7 261.3	TOWER★ 119.0 (CTAF) 257.75	GND CON 121.8 239.25	ASR/PAR
-----------------------------	-------------------------------	--------------------------------------	--------------------------------	---------



ELEV	330	TDZE	328
Rwy 16 ldg 3913'		158°	



CATEGORY	A	B	C	D
LNAV MDA	800-1	472 (500-1)	800-1 3/8 472 (500-1 3/8)	
CIRCLING	880-1	550 (600-1)	880-1 1/2 550 (600-1 1/2)	940-2 610 (700-2)

FORT JOHNSON, LOUISIANA
Amdt 2 05OCT23

31° 03' N-93° 11' W

MAKS AAF (KPOE)

RNAV (GPS) RWY 16

SC-4, 03 OCT 2024 to 31 OCT 2024

SC-4, 03 OCT 2024 to 31 OCT 2024