

WAAS CH 82519 W05A	APP CRS 054°	Rwy Idg TDZE Apt Elev	5997 31 31
--	------------------------	-----------------------------	---------------------------------------

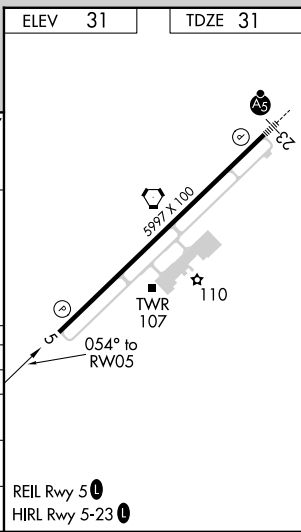
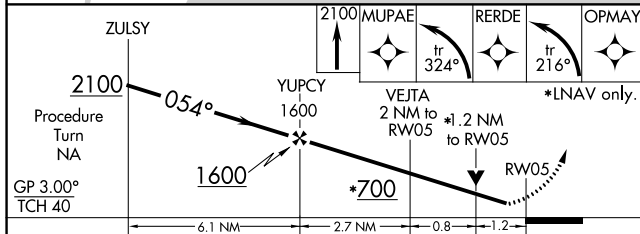
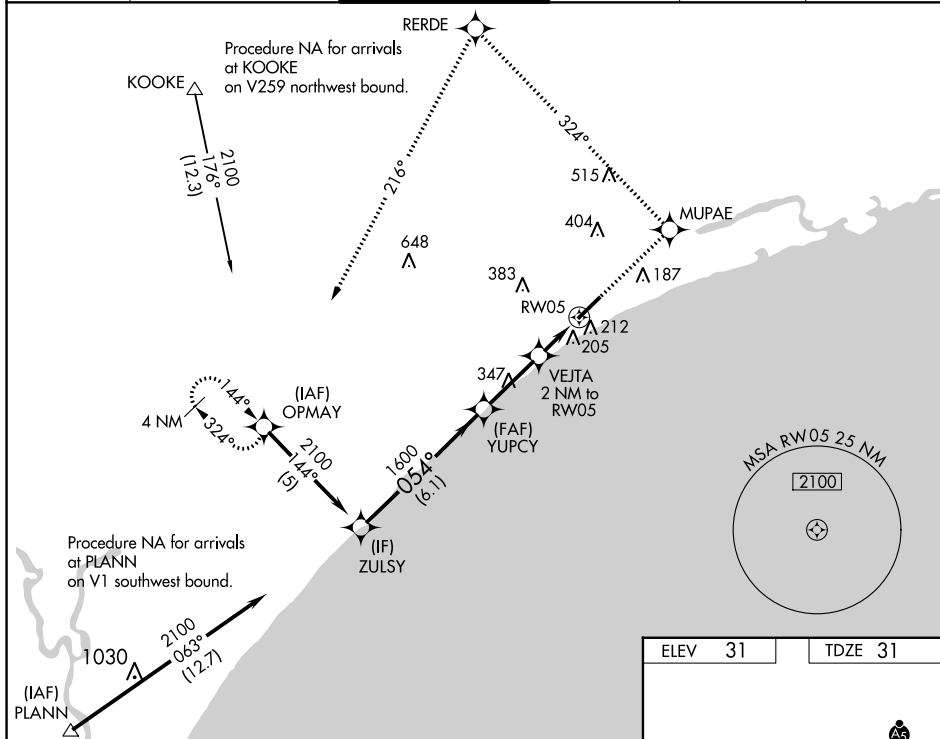
RNAV (GPS) RWY 5

GRAND STRAND (CRE)

▼ For uncompensated Baro-VNAV systems, LNAV/VNAV NA below -15°C (5°F) or above 48°C (118°F). DME/DME RNP-0.3 NA. Visibility reduction by helicopters NA. When local altimeter setting not received use Myrtle Beach Intl altimeter setting and increase all DA 31 feet and all MDA 40 feet. VDP and Baro-VNAV NA with Myrtle Beach Intl altimeter setting.

▲ MISSED APPROACH: Climb to 2100 direct MUPAE and left turn on track 324° to RERDE and left turn on track 216° to OPMAY and hold.

ATIS 119.625	MYRTLE BEACH APP CON* 119.2 350.3	STRAND TOWER* 124.6 (CTAF) 0 257.6	GND CON 121.8 257.6	CLNC DEL 121.8	UNICOM 122.95
------------------------	---	--	-------------------------------	--------------------------	-------------------------



CATEGORY	A	B	C	D
LPV DA	281-1		250 (300-1)	
LNAV/VNAV DA	496-1¾		465 (500-1¾)	
LNAV MDA	460-1	429 (500-1)	460-1½ 429 (500-1½)	460-1½ 429 (500-1½)
CIRCLING	520-1	489 (500-1)	720-2 689 (700-2)	720-2½ 689 (700-2½)

SE-2, 03 OCT 2024 to 31 OCT 2024

SE-2, 03 OCT 2024 to 31 OCT 2024