

(DARCY6.DARCY) 19283

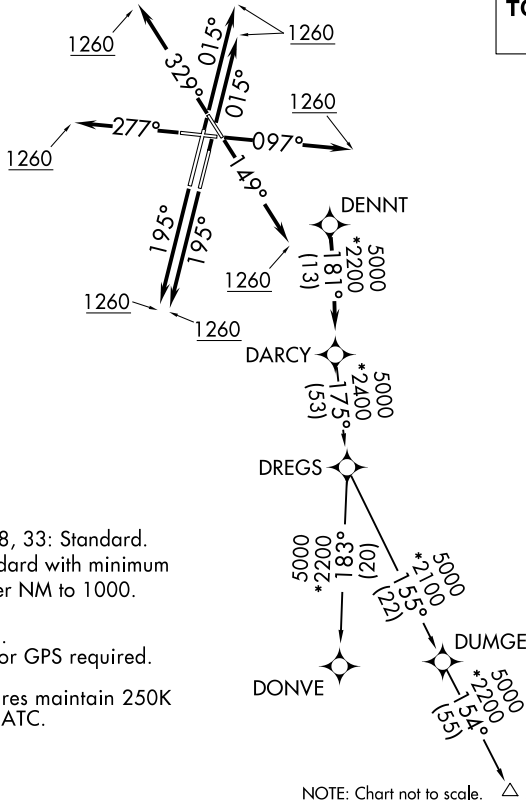
# DARCY SIX DEPARTURE (RNAV)

AL-5104 (FAA)

DUPAGE (DPA)  
CHICAGO/WEST CHICAGO, ILLINOIS

ATIS  
132.075  
GND CON  
121.8  
DUPAGE TOWER  
120.9 257.8  
CHICAGO DEP CON  
133.5 349.0

**TOP ALTITUDE:  
3000**



### TAKEOFF MINIMUMS:

Rwys 2L/R, 10, 20L/R, 28, 33: Standard.  
Rwy 15: 300-1 $\frac{3}{8}$  or standard with minimum  
climb of 205' per NM to 1000.

- NOTE: RADAR required.
- NOTE: DME/DME/IRU or GPS required.
- NOTE: RNAV 1.
- NOTE: Turbojet departures maintain 250K until advised by ATC.

NOTE: Chart not to scale.  $\triangle$  SCOTO

### DEPARTURE ROUTE DESCRIPTION

- TAKEOFF RUNWAYS 2L/R:** Climb heading 015° to 1260, then as assigned by ATC, for vectors to DENNT. Thence . . . .
- TAKEOFF RUNWAY 10:** Climb heading 097° to 1260, then as assigned by ATC, for vectors to DENNT. Thence . . . .
- TAKEOFF RUNWAY 15:** Climb heading 149° to 1260, then as assigned by ATC, for vectors to DENNT. Thence . . . .
- TAKEOFF RUNWAYS 20L/R:** Climb heading 195° to 1260, then as assigned by ATC, for vectors to DENNT. Thence . . . .
- TAKEOFF RUNWAY 28:** Climb heading 277° to 1260, then as assigned by ATC, for vectors to DENNT. Thence . . . .
- TAKEOFF RUNWAY 33:** Climb heading 329° to 1260, then as assigned by ATC, for vectors to DENNT. Thence . . . .

. . . . on track 181° to DARC, then on (transition). Maintain 3000.  
Expect filed altitude 10 minutes after departure.

- DONVE TRANSITION (DARCY6.DONVE):**
- SCOTO TRANSITION (DARCY6.SCOTO):**

**DARCY SIX DEPARTURE (RNAV)**  
(DARCY6.DARCY) 10OCT19

CHICAGO/WEST CHICAGO, ILLINOIS  
DUPAGE (DPA)

EC-3, 03 OCT 2024 to 31 OCT 2024

EC-3, 03 OCT 2024 to 31 OCT 2024