

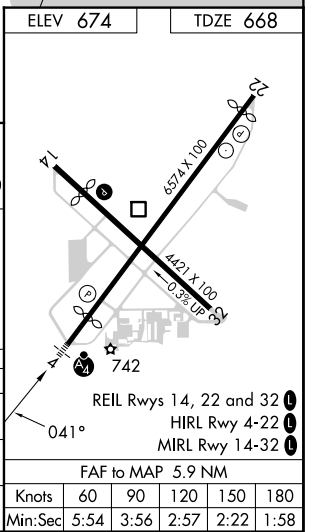
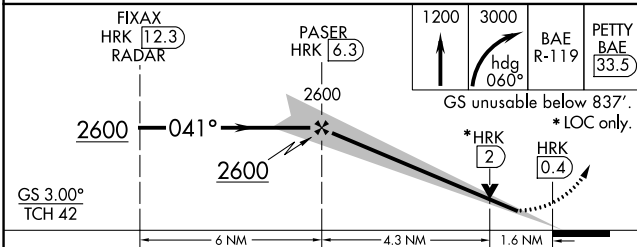
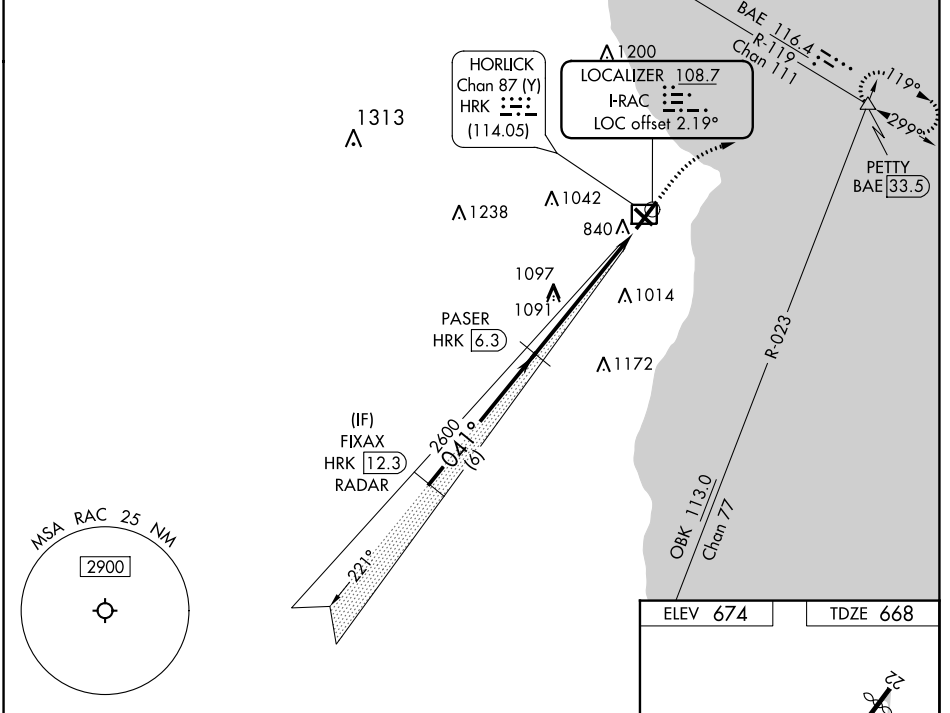
LOC I-RAC <b>108.7</b>	APP CRS <b>041°</b>	Rwy Idg <b>5840</b>
		TDZE <b>668</b>
		Apt Elev <b>674</b>

# ILS or LOC RWY 4

BATTEN INTL (RAC)

RADAR required for procedure entry. DME required.		MALSF	MISSED APPROACH: Climb to 1200 then climbing right turn to 3000 on heading 060° and BAE VOR/DME R-119 to PETTY/BAE 33.5 DME and hold, continue climb-in-hold to 3000.
<p>⚠ Circling Rwy 14 NA at night.</p> <p>⚠ Rwy 4 helicopter visibility reduction below ¾ SM NA. Inop table does not apply to S-ILS 4.</p> <p>DME from HRK DME. Simultaneous reception of I-RAC and HRK DME required.</p>			

ASOS <b>121.425</b>	MILWAUKEE APP CON <b>135.875 317.725</b>	CLNC DEL <b>120.15</b>	UNICOM <b>123.075 (CTAF) 0</b>
------------------------	---	---------------------------	-----------------------------------



CATEGORY	A	B	C	D
S-ILS 4	923-¾ 255 (300-¾)			
S-LOC 4	1220-¾	552 (600-¾)	1220-1¾	552 (600-1¾)
CIRCLING	1220-1	546 (600-1)	1380-2	1380-2¼
			706 (800-2)	706 (800-2¼)

EC-3, 03 OCT 2024 to 31 OCT 2024

EC-3, 03 OCT 2024 to 31 OCT 2024

Knots	60	90	120	150	180
Min:Sec	5:54	3:56	2:57	2:22	1:58