

LOC/DME I-FUL <b>108.9</b> Chan <b>26</b>	APP CRS <b>243°</b>	Rwy Idg <b>2868</b> TDZE <b>95</b> Apt Elev <b>96</b>
-------------------------------------------------	------------------------	-------------------------------------------------------------

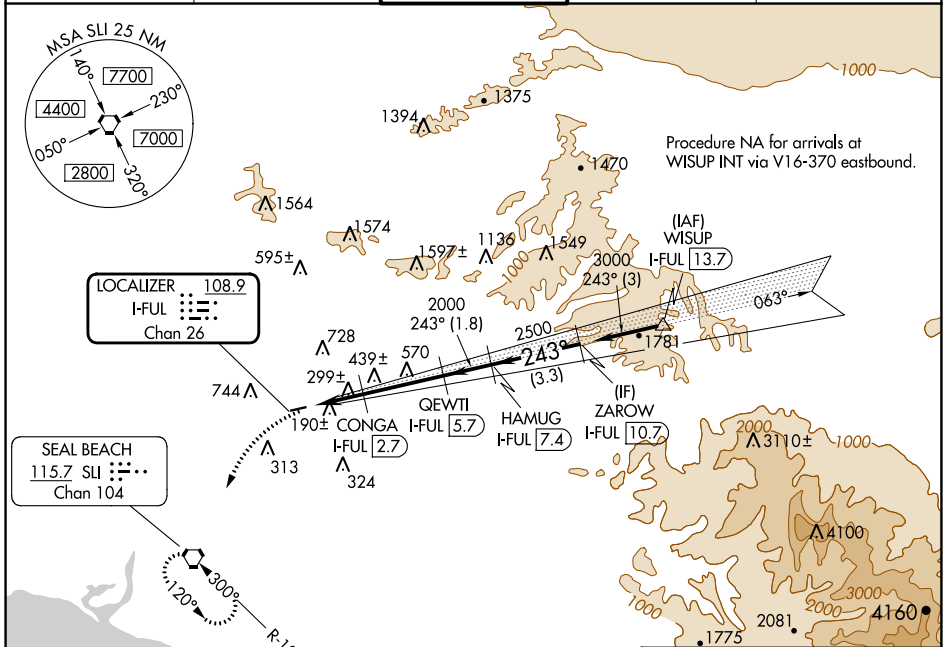
# LOC/DME RWY 24

FULLERTON MUNI (F'UL)

**▽** Inoperative table does not apply.  
**▲** Night landing: Rwy 6 NA.  
 Helicopter visibility reduction below 1 SM NA.

MISSED APPROACH: Climbing left turn to 2600 direct SLI VORTAC and hold.

ATIS <b>125.05</b>	SOCAL APP CON <b>125.35 316.125</b>	<b>FULLERTON TOWER*</b> <b>119.1 (CTAF) 0</b>	GND CON <b>121.8</b>	UNICOM <b>122.95</b>
-----------------------	----------------------------------------	--------------------------------------------------	-------------------------	-------------------------



SW-3, 03 OCT 2024 to 31 OCT 2024

SW-3, 03 OCT 2024 to 31 OCT 2024

	ELEV 96	TDZE 95		
2600	SLI	VGSI and descent angles not coincident (VGSI Angle 4.00/TCH 33).		
		ZAROW I-FUL 10.7		
		HAMUG I-FUL 7.4		
		CONGA I-FUL 2.7		
		QEWTI I-FUL 5.7		
		I-FUL 0.5		
		3.45° TCH 33		
		2000		
		2500		
		3000		
		920		
		Procedure Turn NA		
		2.2 NM		
		2.9 NM		
		1.8 NM		
		3.3 NM		
CATEGORY	A	B	C	D
S-24	560-1	465 (500-1)		NA
CIRCLING	760-1 664 (700-1)	1060-1½ 964 (1000-1½)		NA

