

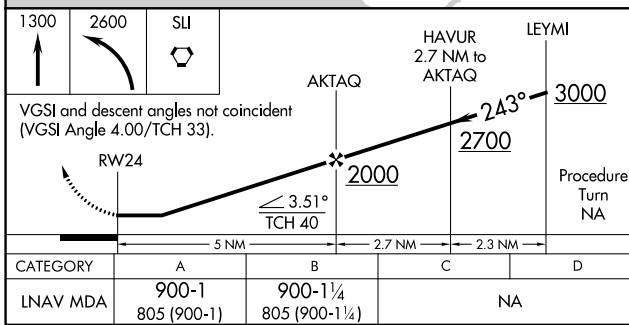
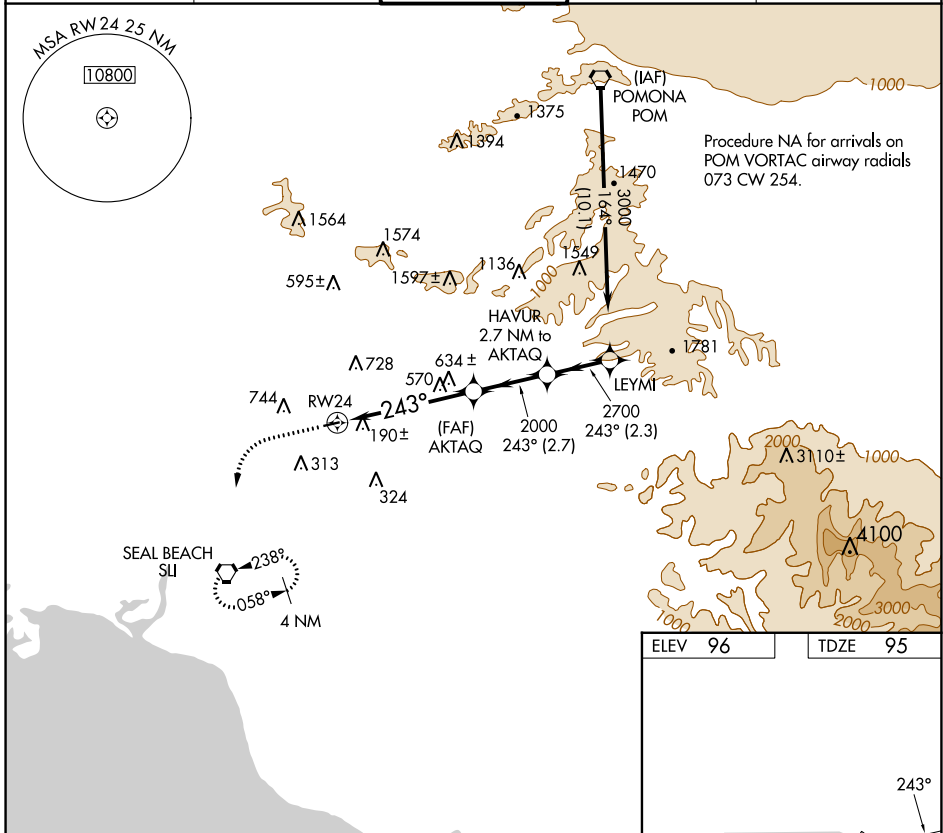
APP CRS	Rwy Idg	2868
243°	TDZE	95
	Apt Elev	96

RNAV (GPS) RWY 24

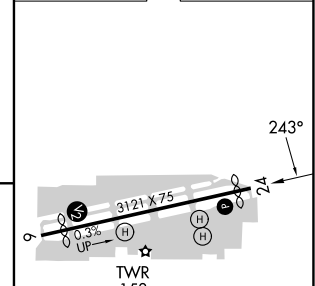
FULLERTON MUNI (FUL)

RNP APCH.		MISSED APPROACH: Climb to 1300, then climbing left turn to 2600 direct SLI VORTAC and hold.		
<p>▼ Inoperative table does not apply.</p> <p>▲ NA Helicopter visibility reduction below 1 SM NA.</p>				

ATIS 125.05	SOCAL APP CON 125.35 316.125	FULLERTON TOWER ★ 119.1 (CTAF) 0	GND CON 121.8	UNICOM 122.95
-----------------------	--	---	-------------------------	-------------------------



ELEV	96	TDZE	95
------	----	------	----



CATEGORY	A	B	C	D
LNAV MDA	900-1 805 (900-1)	900-1¼ 805 (900-1¼)	NA	

MIRL Rwy 6-24 0
REIL Rwy 6 and 24 0

SW-3, 03 OCT 2024 to 31 OCT 2024

SW-3, 03 OCT 2024 to 31 OCT 2024