


NDB GUY <b>275</b>	APP CRS <b>177°</b>	Rwy Idg TDZE Apt Elev	<b>5904</b> <b>3125</b> <b>3125</b>
-----------------------	------------------------	-----------------------------	---


# NDB RWY 18

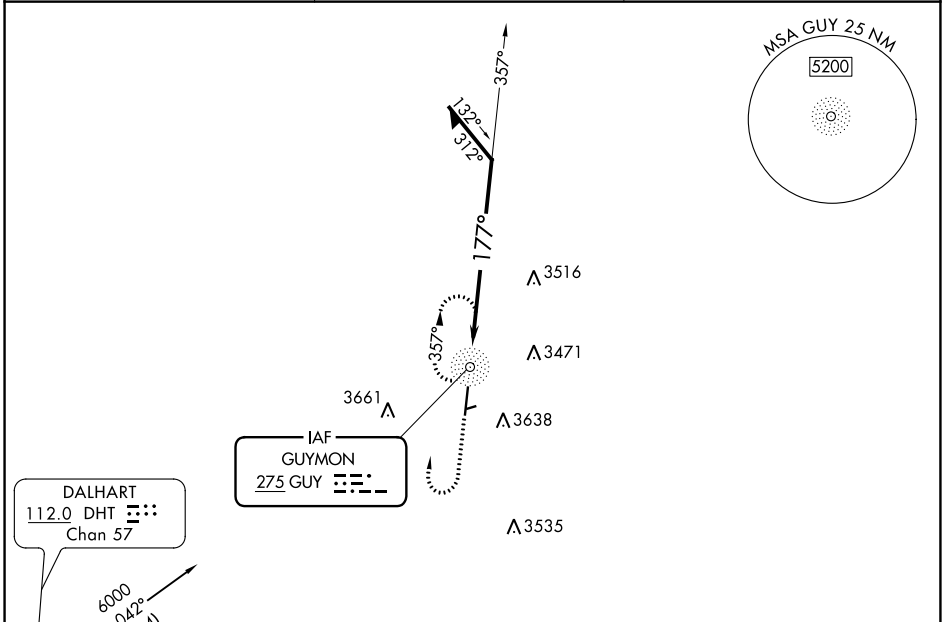
GUYMON MUNI (GUY)

**⚠** Circling NA to Rwys 6 and 24. Circling NA east of Rwy 18-36. When local altimeter setting not received, use Liberal altimeter setting and increase all MDAs 120 feet and visibility Cats A and C ½ SM. For inop ALS, increase S-18 Cat C visibility to 2½ SM. For inop ALS when using Liberal altimeter setting, inop table does not apply to S-18 Cat C.

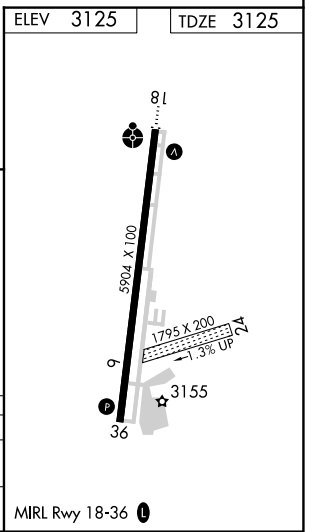
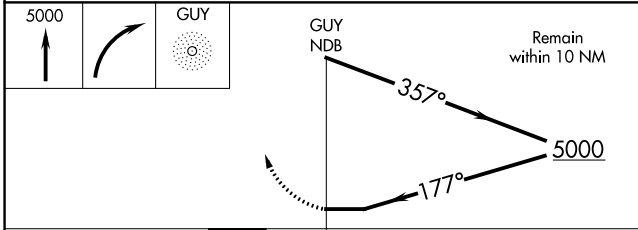
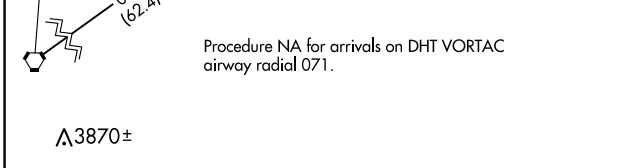
**ODALS** 

**MISSED APPROACH:** Climb to 5000 then right turn direct GUY NDB and hold.

ASOS <b>119.925</b>	KANSAS CITY CENTER <b>134.0 257.865</b>	UNICOM <b>122.7 (CTAF)</b> 
------------------------	--	---



Procedure NA for arrivals on DHT VORTAC airway radial 071.



CATEGORY	A	B	C	D
S-18	3900-¾ 775 (800-¾)	3900-1 775 (800-1)	3900-2 775 (800-2)	NA
<b>C</b> CIRCLING	3900-1 775 (800-1)	3900-1¼ 775 (800-1¼)	3980-2½ 855 (900-2½)	NA

SC-1, 03 OCT 2024 to 31 OCT 2024

SC-1, 03 OCT 2024 to 31 OCT 2024