

ILS or LOC RWY 30

LOC I-NSI 109.7	APCH CRS 301°	Rwy Idg TDZE Arprt Elev 10,002 506 506
---------------------------	-------------------------	--

AL-5162 [USN]

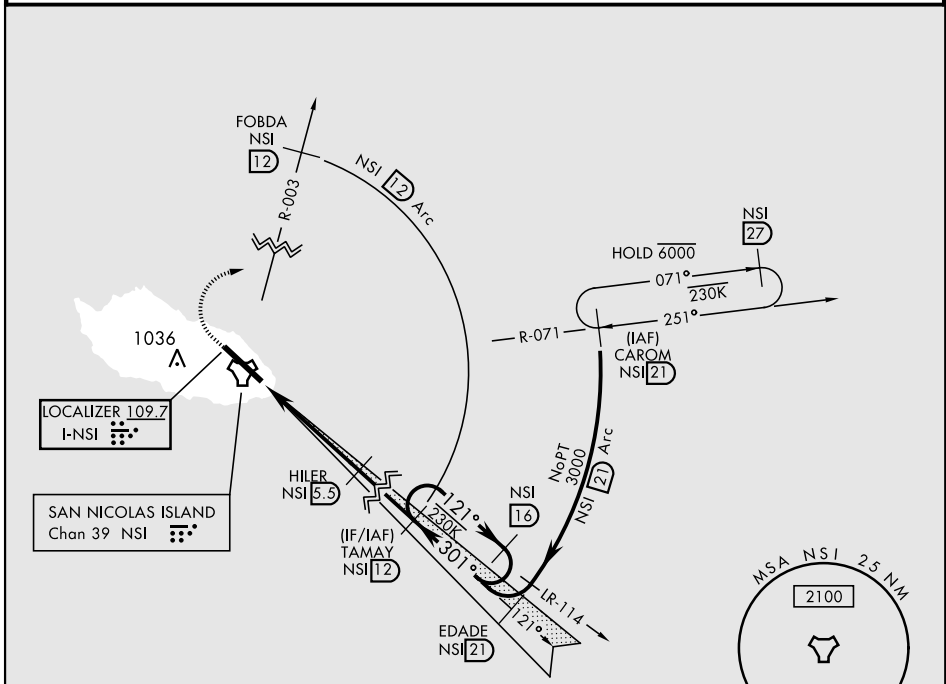
SAN NICOLAS ISLAND NOLF (KNSI)

DME required for ILS procedure. RADAR or TACAN required.

▼ *Circling not authorized W of Rwy 12-30.

MISSED APPROACH: Climb to 1000 via heading 301°, then climbing right turn to 3000 to intercept NSI TACAN R-003 to FOBDA, then arc E of NSI 12 mile arc to TAMAY and hold.

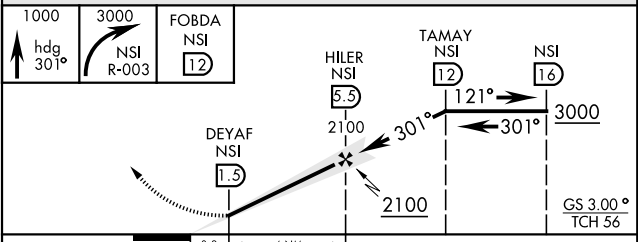
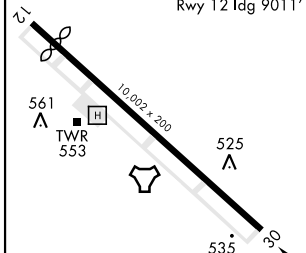
TOWER ★
126.85 379.3



EMERG SAFE ALT 100 NM 10,900

ELEV 506	TDZE 506
----------	----------

Rwy 12 Idg 9011'



CATEGORY	A	B	C	D	E
S-ILS 30		706-¾	200	(200-¾)	
S-LOC 30		780-1	274	(300-1)	
CIRCLING*	860-1 354 (400-1)	960-1 454 (500-1)	960-1½ 454 (500-1½)	1060-2 554 (600-2)	

HIRL Rwy 12-30

FAF to MAP 4 NM

Knots	60	90	120	150	180
Min:Sec	4:00	2:40	2:00	1:36	1:20

ILS or LOC RWY 30

SW-3, 03 OCT 2024 to 31 OCT 2024

SW-3, 03 OCT 2024 to 31 OCT 2024