

SAN NICOLAS ISLAND, CALIFORNIA

# RNAV (GPS) RWY 30

SAN NICOLAS ISLAND NOLF (KNSI)

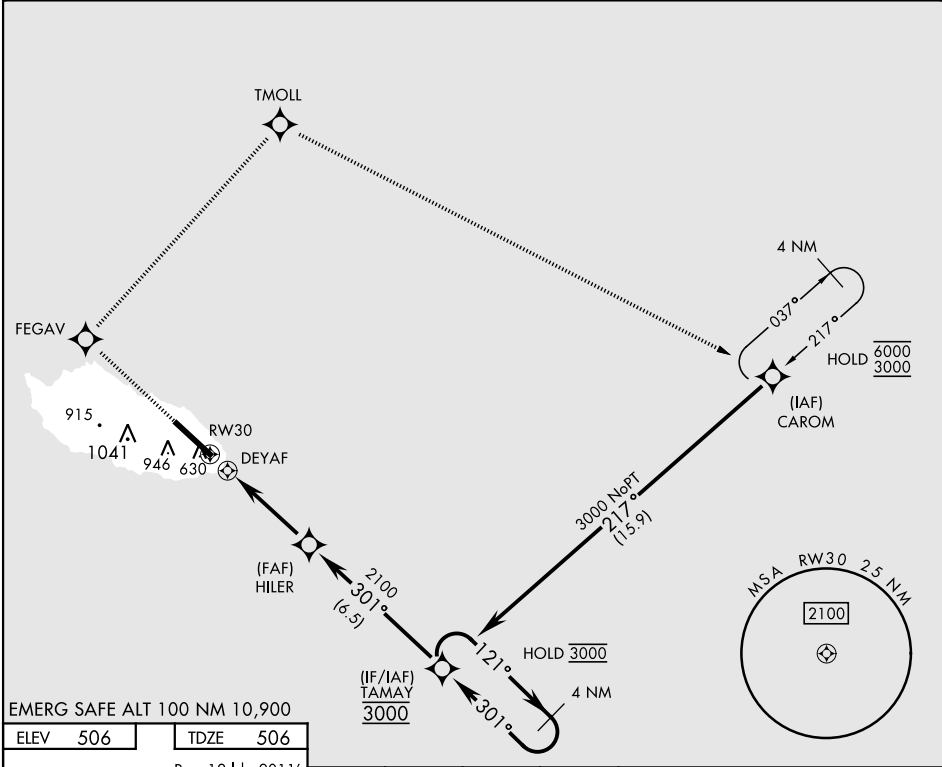
WAAS CH <b>47673</b> <b>W30A</b>	APCH CRS <b>301°</b>	Rwy ldg <b>10,002</b> TDZE <b>506</b> Arpt Elev <b>506</b>
--	-------------------------	--

AL-5162 [USN]

RNP APCH  
 ▼ \* Circling not authorized W of Rwy 12-30.

MISSED APPROACH: Climb to 3000 direct FEGAV, track 031° to TMOLL, track 099° to CAROM and hold.

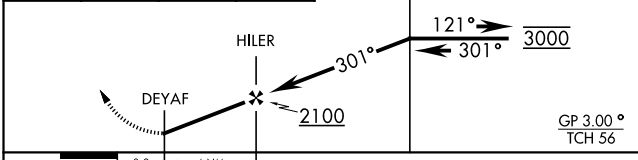
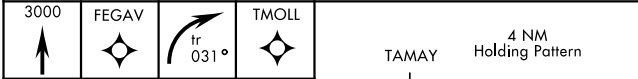
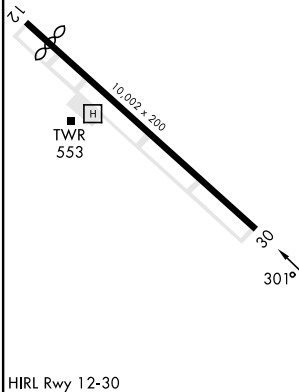
TOWER ★  
**126.85 379.3**



EMERG SAFE ALT 100 NM 10,900

ELEV 506	TDZE 506
----------	----------

Rwy 12 ldg 9011'



CATEGORY	A	B	C	D	E
LPV DA	706- <sup>3</sup> / <sub>4</sub>		200	(200- <sup>3</sup> / <sub>4</sub> )	
LNAV MDA	880-1	374 (400-1)	920-1 <sup>1</sup> / <sub>8</sub> 414 (500-1 <sup>1</sup> / <sub>8</sub> )		980-1 <sup>3</sup> / <sub>8</sub> 474 (500-1 <sup>3</sup> / <sub>8</sub> )
<b>C</b> CIRCLING*	880-1 374 (400-1)	960-1 454 (500-1)	960-1 <sup>1</sup> / <sub>2</sub> 454 (500-1 <sup>1</sup> / <sub>2</sub> )	1060-2 554 (600-2)	

SAN NICOLAS ISLAND, CALIFORNIA  
 Orig 18MAY23

33°14'N-119°27'W

SAN NICOLAS ISLAND NOLF (KNSI)

# RNAV (GPS) RWY 30

SW-3, 03 OCT 2024 to 31 OCT 2024

SW-3, 03 OCT 2024 to 31 OCT 2024