

TACAN RWY 30

TACAN NSI Chan 39	APCH CRS 292°	Rwy ldg TDZE Arprt Elev 10,002 506 506
-----------------------------	-------------------------	----------------------------------------------------------------------------

AL-51 62 [USN]

SAN NICOLAS ISLAND NOLF (KNSI)

RADAR required.

MISSED APPROACH: Climbing right turn to 3000, intcp the NSI TACAN R-003 to FOBDA and hold.

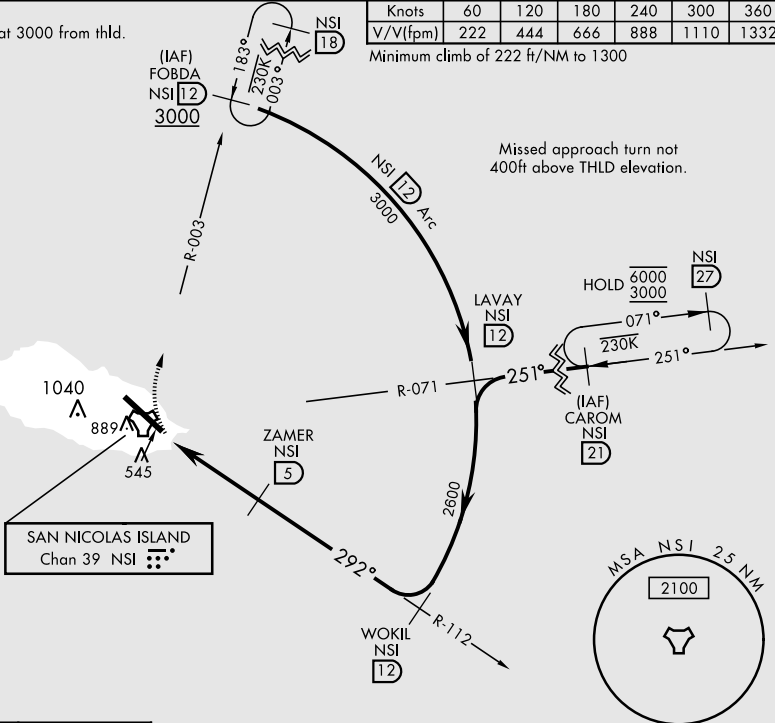
*Circling not authorized W of Rwy 12-30.

TOWER ★
126.85 379.3

CAUTION:
FAC 258° from RCL at 3000 from thld.

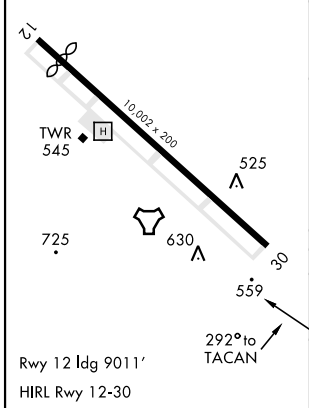
Knots	60	120	180	240	300	360
V/V(fpm)	222	444	666	888	1110	1332

Minimum climb of 222 ft/NM to 1300



ELEV 506	TDZE 506
----------	----------

EMERG SAFE ALT 100 NM 10,900



	3000 NSI R-003	FOBDA NSI 12	ZAMER NSI 5	WOKIL R-112 NSI 12	LAVAY R-071 NSI 12	CAROM R-071 NSI 21
	TACAN ZAPSU NSI 1.5		1800	2600	3000	3000
	0.8		3.5 NM		2.72° TCH 50	
CATEGORY	A	B	C	D	E	
S-30	820-1		314	(400-1)		
CIRCLING*	860-1 354 (400-1)	960-1 454 (500-1)	960-1½ 454 (500-1½)	1060-2 554 (600-2)		

TACAN RWY 30

SW-3, 03 OCT 2024 to 31 OCT 2024

SW-3, 03 OCT 2024 to 31 OCT 2024