

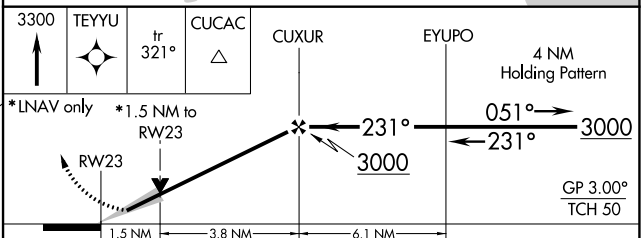
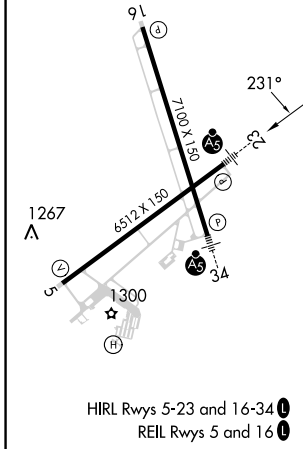
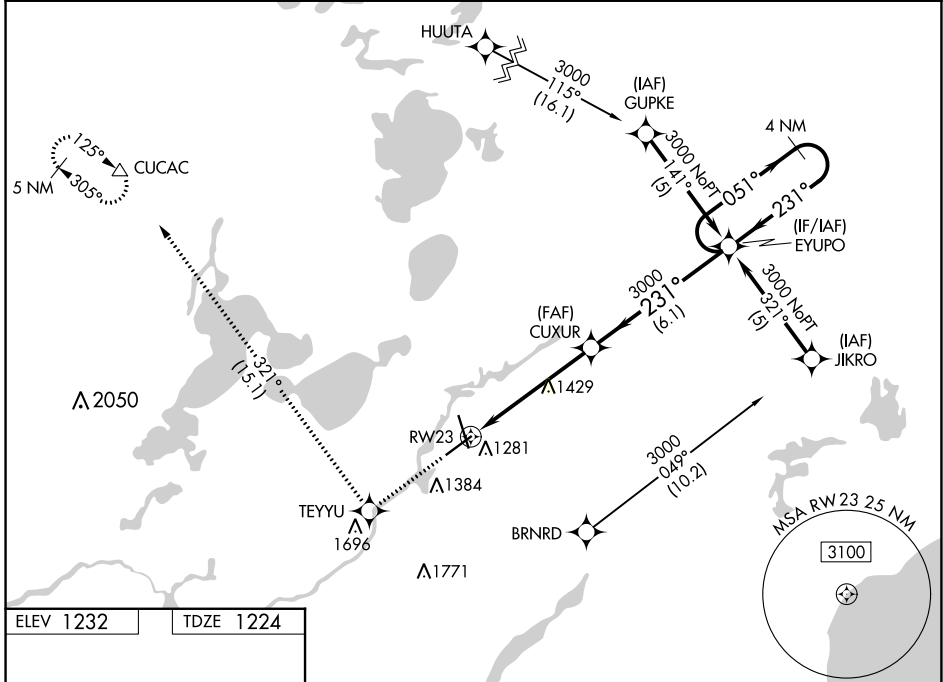
| | | |
|--|------------------------|---|
| WAAS CH 82502 W23A | APP CRS 231° | Rwy Idg TDZE 1224 Apt Elev 1232 |
|--|------------------------|---|

RNAV (GPS) RWY 23

BRainerd LAKES RGNL (BRD)

| | | |
|--|-----------|---|
| RNP APCH. ▼ For uncompensated Baro-VNAV systems, LNAV/VNAV NA below -17°C or above 54°C. Baro-VNAV and VDP NA when using Aikiri altimeter setting. When local altimeter setting not received, use Aikiri altimeter setting and increase all DAs 52 feet and all MDAs 60 feet. | MALSR | MISSED APPROACH: Climb to 3300 direct TEYU and on track 321° to CUCAC and hold. |
|--|-----------|---|

| | | |
|------------------------|---|--|
| ASOS 126.775 | MINNEAPOLIS CENTER 118.05 239.0 | UNICOM 122.7 (CTAF) 1 |
|------------------------|---|--|



| CATEGORY | A | B | C | D |
|-------------------|--------|-------------|-------------------------|-------------------------|
| LPV DA | | 1501-½ | 277 (300-½) | |
| LNAV/VNAV DA | | 1573-¾ | 349 (400-¾) | |
| LNAV MDA | 1760-½ | 536 (600-½) | 1760-1 536 (600-1) | 1760-1½ 536 (600-1¼) |
| C CIRCLING | 1760-1 | 528 (600-1) | 1760-1½ 528 (600-1½) | 1860-2 628 (700-2) |

NC-1, 03 OCT 2024 to 31 OCT 2024

NC-1, 03 OCT 2024 to 31 OCT 2024