

# JUNPR SIX DEPARTURE (RNAV)

AUGUSTA DEP CON ★  
119.15 284.625  
CLNC DEL  
126.075  
CTAF  
122.8

**TOP ALTITUDE:  
ASSIGNED BY ATC**

RNAV 1 - DME/DME/IRU or GPS required.

RADAR required.

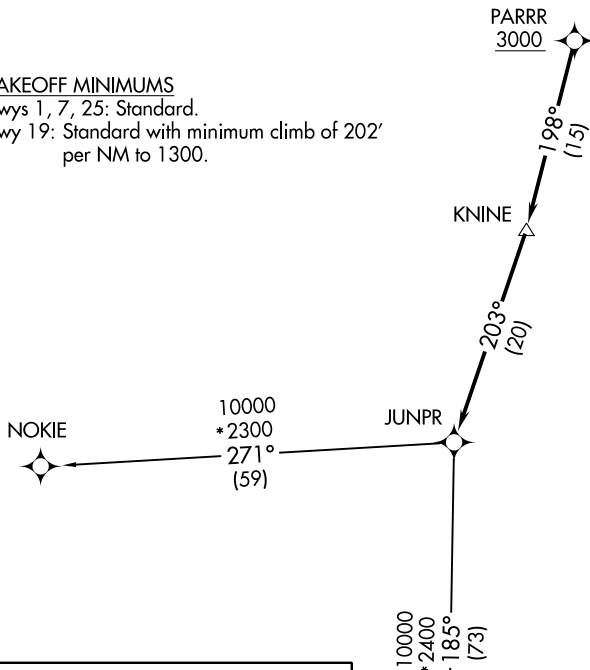


NOTE: Do not exceed 250K until advised by ATC.

TAKEOFF MINIMUMS

Rwys 1, 7, 25: Standard.

Rwy 19: Standard with minimum climb of 202' per NM to 1300.



SE-2, 03 OCT 2024 to 31 OCT 2024

SE-2, 03 OCT 2024 to 31 OCT 2024

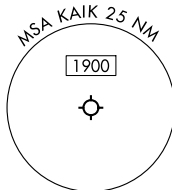
**DEPARTURE ROUTE DESCRIPTION**

TAKEOFF RUNWAYS 1, 7, 19, 25:

Climb on heading assigned by ATC for vectors to cross PARRR at or above 3000, then on depicted route to JUNPR, thence. . .

. . . (transition), maintain altitude assigned by ATC. Expect clearance to filed altitude/flight level within 10 minutes after departure.

GREEN TRANSITION (JUNPR6.GREEN)  
NOKIE TRANSITION (JUNPR6.NOKIE)



NOTE: Chart not to scale.

# JUNPR SIX DEPARTURE (RNAV)

(JUNPR6.JUNPR) 14JUL22

AIKEN, SOUTH CAROLINA  
AIKEN RGNL (AIK)