

# KAOLN SIX DEPARTURE (RNAV)

AIKEN RGNL (AIK)  
AIKEN, SOUTH CAROLINA

SE-2, 03 OCT 2024 to 31 OCT 2024

CTAF  
122.8  
AUGUSTA DEP CON ★  
119.15 284.625  
CLINC DEL  
126.075

- NOTE: DME/DME/IRU or GPS required.
- NOTE: RADAR required for non-GPS equipped aircraft.
- NOTE: RNAV 1.
- NOTE: For use during Masters Golf Tournament week only.
- NOTE: Do not exceed 250K until advised by ATC.

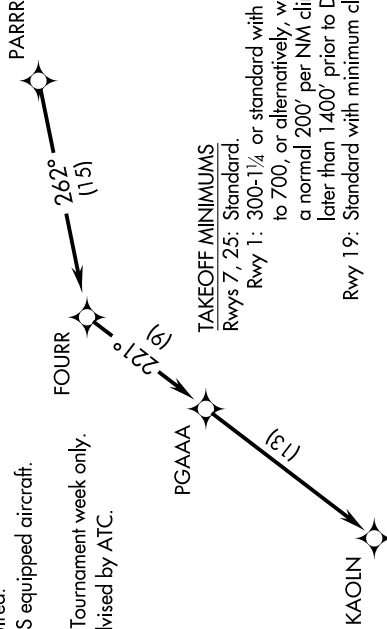
TAKEOFF MINIMUMS  
Rwys 7, 25: Standard.

Rwy 1: 300-1¼ or standard with minimum climb of 216' per NM to 700, or alternatively, with standard takeoff minimums and a normal 200' per NM climb gradient; takeoff must occur no later than 1400' prior to DER.

Rwy 19: Standard with minimum climb of 201' per NM to 1000.

NOTE: Chart not to scale.

TOP ALTITUDE:  
ASSIGNED BY ATC



## DEPARTURE ROUTE DESCRIPTION

TAKEOFF RWYS 1, 7, 19, 25: Climb on assigned heading for RADAR vectors to PARRR, then on depicted route to KAOLN. Thence. . . .

. . . . maintain altitude assigned by ATC. Expect clearance to filed altitude/flight level within 10 minutes after departure.

# KAOLN SIX DEPARTURE (RNAV)

SE-2, 03 OCT 2024 to 31 OCT 2024