

WAAS CH <b>90301</b> <b>W07A</b>	APP CRS <b>066°</b>	Rwy Idg TDZE Apt Elev	<b>5500</b> <b>515</b> <b>529</b>
--	------------------------	-----------------------------	---

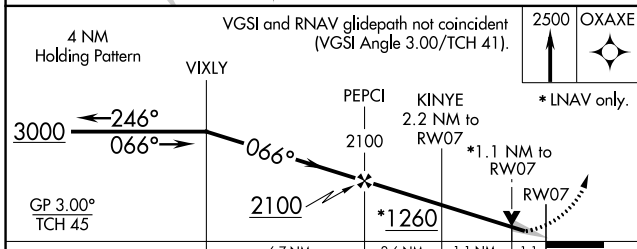
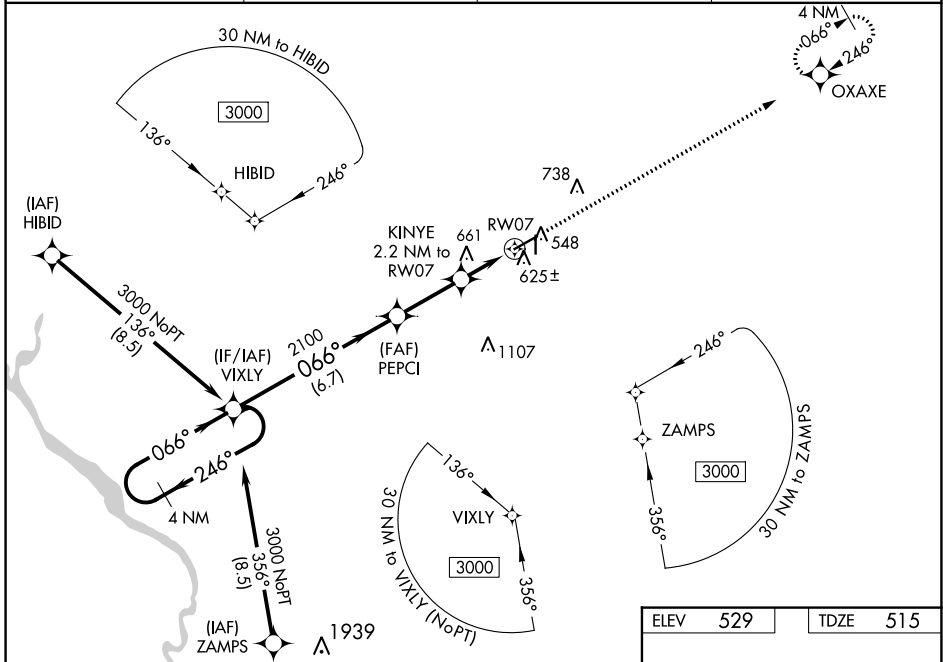
# RNAV (GPS) RWY 7

AIKEN RGNL (AIK)

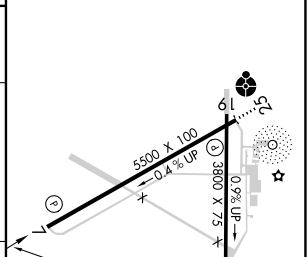
**⚠** Baro-VNAV NA when using Augusta Rgnl at Bush Fld altimeter setting. For uncompensated Baro-VNAV systems, LNAV/VNAV NA below -16°C (4°F) or above 40°C (104°F). DME/DME RNP-0.3 NA. VDP NA with Augusta Rgnl at Bush Fld altimeter setting. When local altimeter setting not received, use Augusta Rgnl at Bush Fld altimeter setting: increase LPV all Cats DAs to 890 feet and all Cats visibility ¼ SM; increase LNAV/VNAV all Cats DAs to 890 feet and all Cats visibility ¾ SM; increase all MDAs 120 feet and LNAV Cats C/D visibility ¾ SM and Circling Cat C visibility ¼ SM.

**⚠** MISSED APPROACH: Climb to 2500 direct OXAXE and hold.

AWOS-3 <b>118.025</b>	AUGUSTA APP CON * <b>119.15 284.625</b>	CLNC DEL <b>126.075</b>	UNICOM <b>122.8 (CTAF) 0</b>
--------------------------	--	----------------------------	---------------------------------



ELEV	529	TDZE	515
------	-----	------	-----



CATEGORY	A	B	C	D
LPV DA		715-¾	200 (200-¾)	
LNAV/VNAV DA		786-⅞	271 (300-⅞)	
LNAV MDA	920-1	405 (400-1)	920-1⅛	405 (400-1⅛)
CIRCLING	980-1 451 (500-1)	1000-1 471 (500-1)	1140-1¾ 611 (700-1¾)	1420-3 891 (900-3)

REIL Rwy 25  
MIRL Rwy 7-25 0

SE-2, 03 OCT 2024 to 31 OCT 2024

SE-2, 03 OCT 2024 to 31 OCT 2024