

(LINSE1.LINSE) 24193

AL-5212 (FAA)

MONTGOMERY COUNTY AIRPARK (GAI)

LINSE ONE DEPARTURE (RNAV)

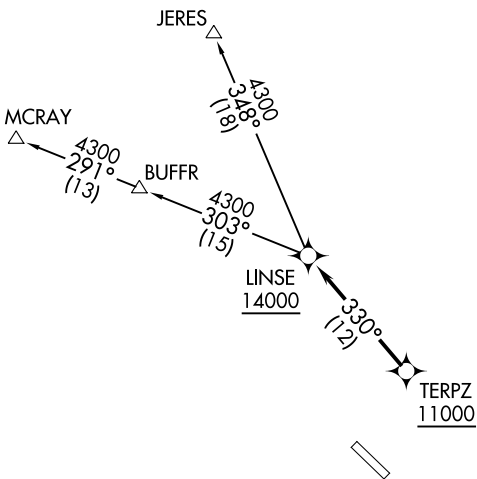
GAITHERSBURG, MARYLAND

POTOMAC DEP CON
128.7 307.9
AWOS-3PT
128.275
CLNC DEL
121.6

RNAV 1 - DME/DME/IRU or GPS.

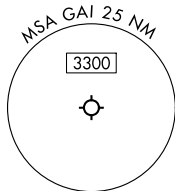
RADAR required.

**TOP ALTITUDE:
16000**



NE-3, 03 OCT 2024 to 31 OCT 2024

NE-3, 03 OCT 2024 to 31 OCT 2024



NOTE: Jet aircraft only.

TAKEOFF MINIMUMS:
Rwy 14, 32: Standard.

NOTE: Chart not to scale.



DEPARTURE ROUTE DESCRIPTION

Climb on assigned heading for RADAR vectors to cross TERPZ at or above 11000, thence....

...then on track 330° to cross LINSE at or above 14000. Then on assigned transition. Maintain 16000, expect filed altitude 10 minutes after departure.

JERES TRANSITION (LINSE1.JERES)

MCRAJ TRANSITION (LINSE1.MCRAJ)

LINSE ONE DEPARTURE (RNAV)

(LINSE1.LINSE) 11 JUL 24

GAITHERSBURG, MARYLAND
MONTGOMERY COUNTY AIRPARK (GAI)