

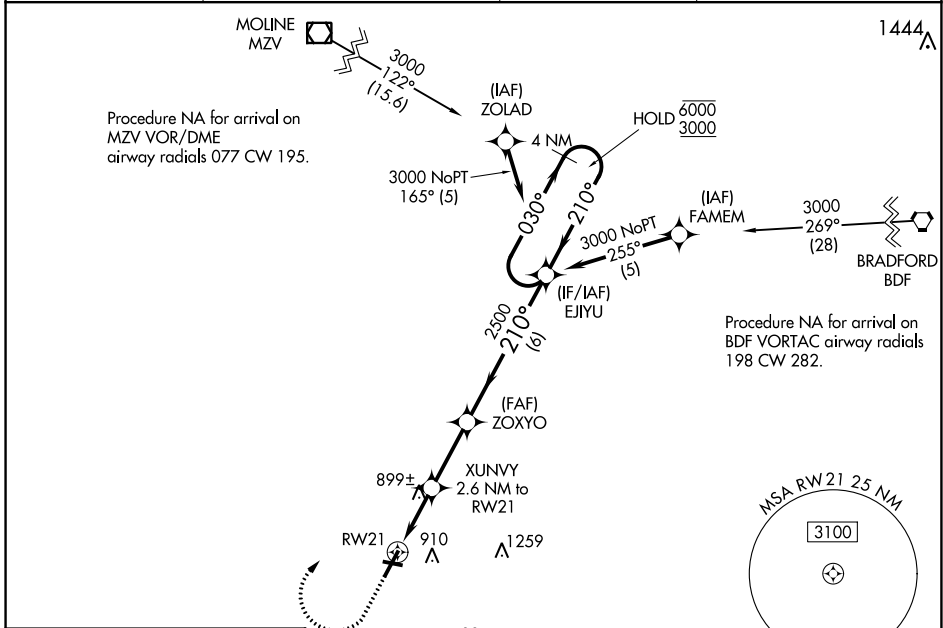
WAAS CH <b>50428</b> <b>W21A</b>	APP CRS <b>210°</b>	Rwy Idg TDZE Apt Elev	<b>5792</b> <b>764</b> <b>764</b>
--	------------------------	-----------------------------	---

# RNAV (GPS) RWY 21

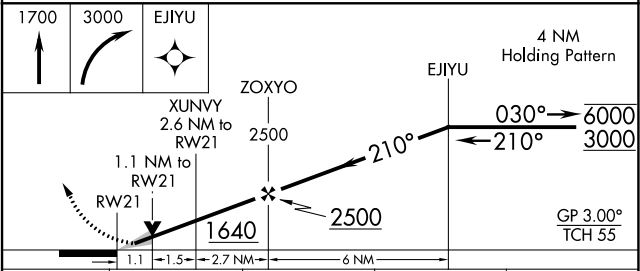
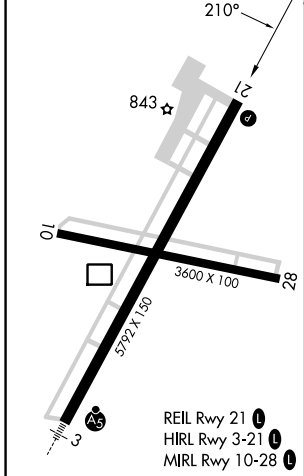
GALESBURG MUNI (GBG)

RNP APCH - GPS.		MISSED APPROACH: Climb to 1700 then climbing right turn to 3000 direct EJYU and hold.	
<p><b>▼</b> <b>▲</b> For uncompensated Baro-VNAV systems, LNAV/VNAV NA below -16°C or above 54°C.</p>			

AWOS-3 <b>118.975</b>	QUAD CITY APP CON ★ <b>133.275 257.8</b>	CLNC DEL <b>120.7</b>	UNICOM <b>123.0 (CTAF)</b>
--------------------------	---	--------------------------	-------------------------------



ELEV 764	TDZE 764
----------	----------



CATEGORY	A	B	C	D
LPV DA		964- <sup>3</sup> / <sub>4</sub>	200 (200- <sup>3</sup> / <sub>4</sub> )	
LNAV/VNAV DA		1060- <sup>7</sup> / <sub>8</sub>	296 (300- <sup>7</sup> / <sub>8</sub> )	
LNAV MDA	1160-1	396 (400-1)	1160- <sup>1</sup> / <sub>8</sub>	396 (400- <sup>1</sup> / <sub>8</sub> )
<b>C</b> CIRCLING	1220-1	456 (500-1)	1380- <sup>1</sup> / <sub>4</sub> 616 (700- <sup>1</sup> / <sub>4</sub> )	1620- <sup>2</sup> / <sub>4</sub> 856 (900- <sup>2</sup> / <sub>4</sub> )

EC-3, 03 OCT 2024 to 31 OCT 2024

EC-3, 03 OCT 2024 to 31 OCT 2024