

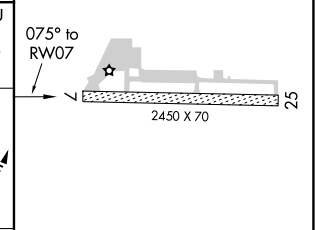
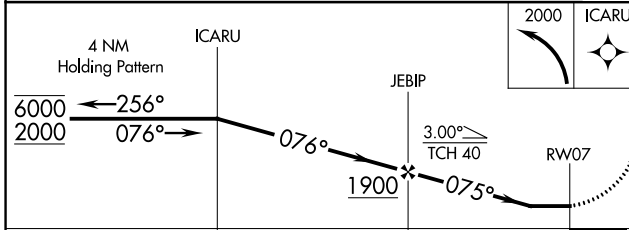
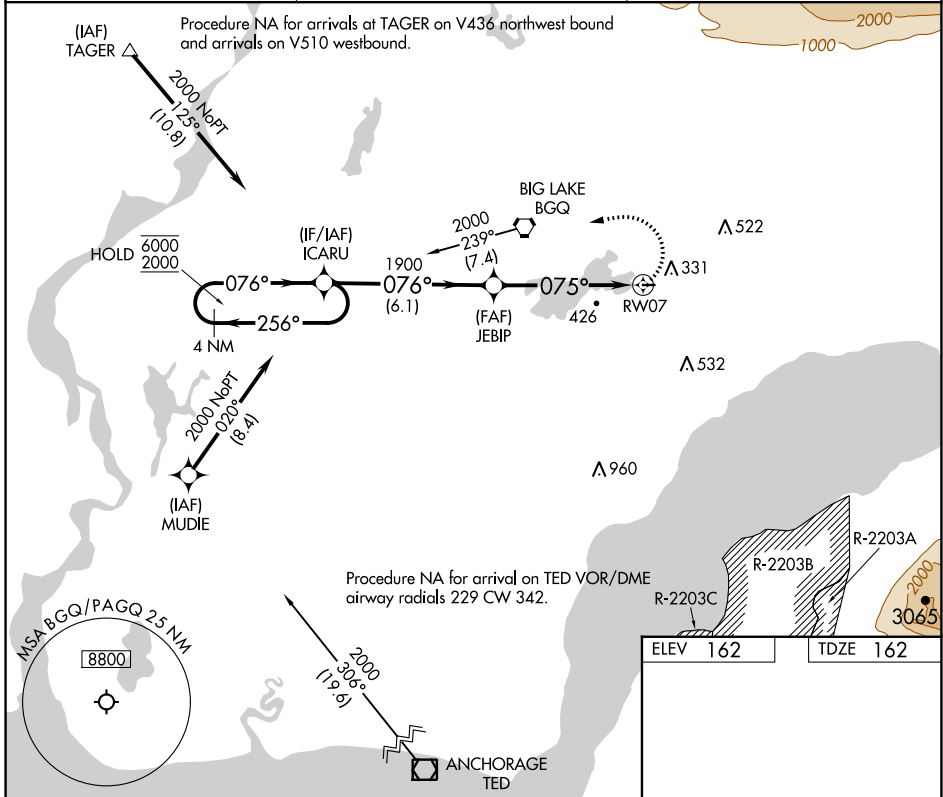
APP CRS	Rwy Idg	<b>2450</b>
<b>075°</b>	TDZE	<b>162</b>
	Apt Elev	<b>162</b>

# RNAV (GPS) RWY 7

BIG LAKE (BGQ) (PAGQ)

RNP APCH.	<p>Procedure NA at night. Rwy 7 helicopter visibility reduction below 1 SM NA. Use Anchorage altimeter setting.</p>	<p>MISSED APPROACH: Climbing left turn to 2000 direct ICARU and hold.</p>
-----------	---	---

ANC ASOS <b>135.5</b>	ANCHORAGE APP CON <b>118.6</b>	CTAF <b>122.80</b>
--------------------------	-----------------------------------	-----------------------



CATEGORY	A	B	C	D
LNVA MDA	940-1 778 (800-1)	940-1¼ 778 (800-1¼)	940-2½ 778 (800-2½)	NA
CIRCLING	940-1 778 (800-1)	960-1¼ 798 (800-1¼)	980-2½ 818 (900-2½)	NA

ELEV	162	TDZE	162
------	-----	------	-----

MIRL Rwy 7-25

AK, 05 SEP 2024 to 31 OCT 2024

AK, 05 SEP 2024 to 31 OCT 2024