

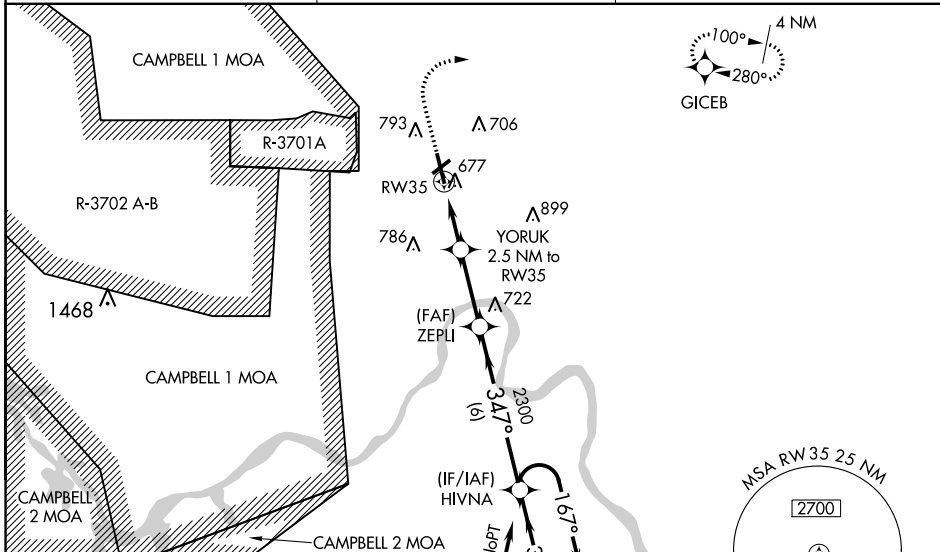
WAAS CH 58300 W35A	APP CRS 347°	Rwy Idg 5999 TDZE 550 Apt Elev 550
--	------------------------	---

RNAV (GPS) RWY 35

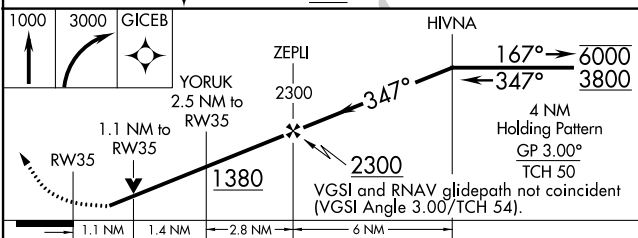
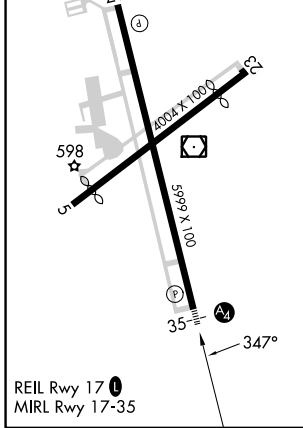
OUTLAW FLD (CKV)

RNP APCH - GPS.	<p>MALS</p>	<p>MISSED APPROACH: Climb to 1000 then climbing right turn to 3000 direct GICEB and hold.</p>
<p>⚠ Circling Rwy 5, 17, 23 NA at night. Baro-VNAV and VDP NA when using Campbell AAF (Fort Campbell) altimeter setting. Rwy 35 helicopter visibility reduction below 3/4 SM NA. Inop table does not apply to LPV all Cats. For uncompensated Baro-VNAV systems, LNAV/VNAV NA below -13°C or above 54°C. Circling NA W of Rwy 17-35. For inop ALS, increase LNAV/VNAV all Cats visibility to 7/8 SM. When local altimeter setting not received, use Campbell AAF (Fort Campbell) altimeter setting.</p>		

ASOS 134.575	CAMPBELL APP CON 134.35 307.025	UNICOM 122.8(CTAF) 0
------------------------	---	--------------------------------



ELEV 550	D	TDZE 550
----------	----------	----------



CATEGORY	A	B	C	D
LPV DA		805-3/4	255 (300-3/4)	
LNAV/VNAV DA		838-3/4	288 (300-3/4)	
LNAV MDA	940-3/4	390 (400-3/4)	940-7/8	390 (400-7/8)
C CIRCLING	1000-1 450 (500-1)	1020-1 470 (500-1)	1020-1 1/2 470 (500-1 1/2)	1200-2 650 (700-2)

SE-1, 03 OCT 2024 to 31 OCT 2024

SE-1, 03 OCT 2024 to 31 OCT 2024