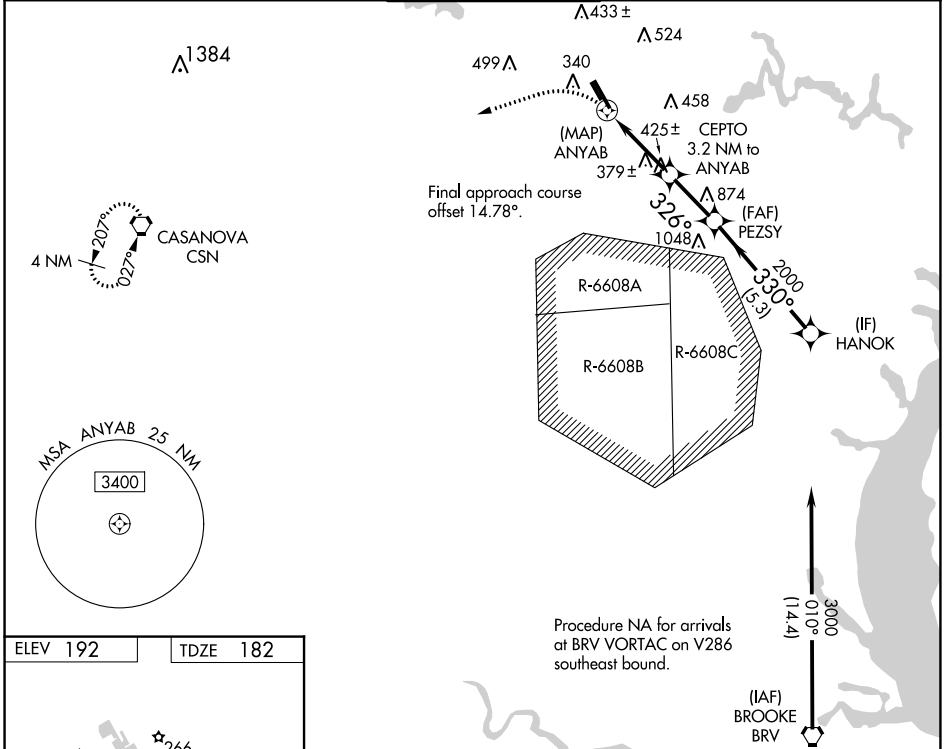


WAAS CH 56239 W34B	APP CRS 326°	Rwy Idg 3715 TDZE 182 Apt Elev 192
--	------------------------	---

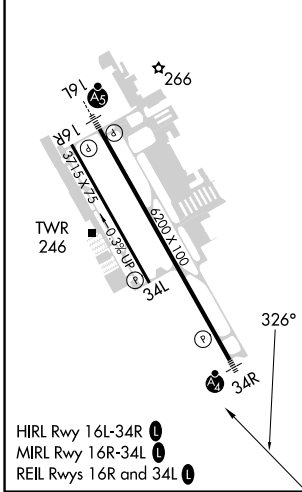
RNAV (GPS) RWY 34L

MANASSAS RGNL/HARRY P DAVIS FLD (HEF)

<p>⚠ DME/DME RNP-0.3 NA. When local altimeter setting not received, use Washington Dulles Intl altimeter setting and increase all MDA 60 feet; increase LNAV Cat C/D and Circling Cat C and D visibility ¼ mile. Helicopter visibility reduction below ¾ SM NA.</p>		<p>MISSED APPROACH: Climbing left turn to 3000 direct CSN VORTAC and hold.</p>		
ATIS 125.175	POTOMAC APP CON 128.525 306.925	MANASSAS TOWER * 133.1 (CTAF) 0 360.75	GND CON 121.8	CLNC DEL 120.2



ELEV 192	TDZE 182
----------	----------



3000	CSN	VGSi and descent angles not coincident (VGSi Angle 3.00/TCH 43).		HANOK
		CEPTO 3.2 NM to ANYAB	PEZSY	3000
		0.9 NM to ANYAB		
		ANYAB	2000	
		1260	2.79° TCH 40	
		0.4 0.9 2.4 NM 2.3 NM 5.3 NM		
CATEGORY	A	B	C	D
LP MDA	640-1	458 (500-1)	640-1 3/8	458 (500-1 3/8)
LNAV MDA	680-1	498 (500-1)	680-1 3/8	498 (500-1 3/8)
ⓐ CIRCLING	720-1 528 (600-1)	740-1 548 (600-1)	840-1 3/4 648 (700-1 3/4)	880-2 1/4 688 (700-2 1/4)

NE-3, 03 OCT 2024 to 31 OCT 2024

NE-3, 03 OCT 2024 to 31 OCT 2024