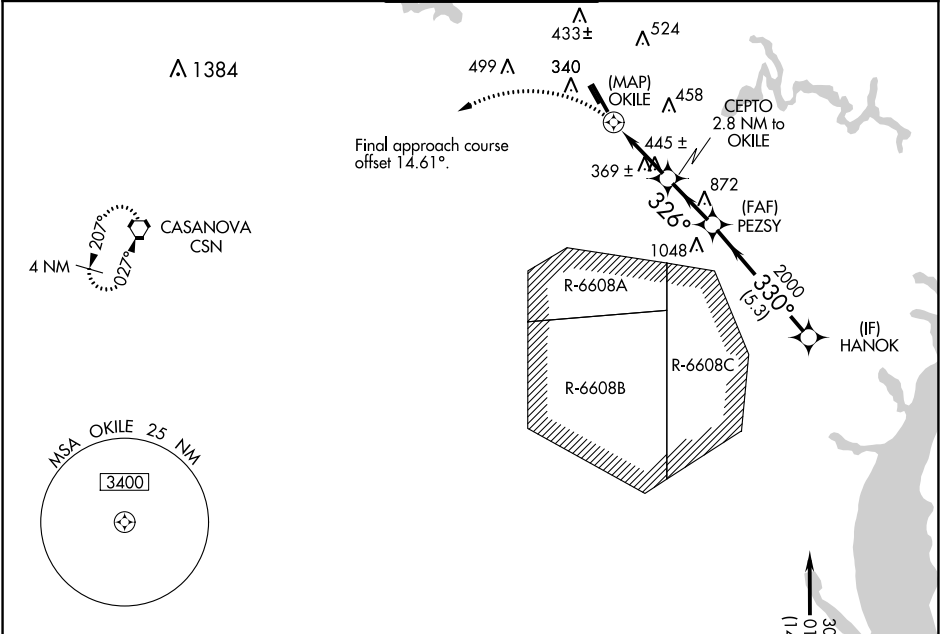


WAAS CH <b>63130</b> <b>W34A</b>	APP CRS <b>326°</b>	Rwy Idg TDZE Apt Elev	<b>6200</b> <b>178</b> <b>192</b>
----------------------------------------	------------------------	-----------------------------	-----------------------------------------

# RNAV (GPS) RWY 34R

MANASSAS RGNL/HARRY P DAVIS FLD (HEF)

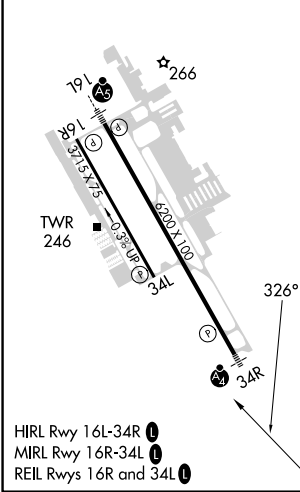
RNP APCH.		MALSF	MISSED APPROACH: Climbing left turn to 3000 direct CSN VORTAC and hold.	
<p>▼ Rwy 34R helicopter visibility reduction below 3/4 SM NA. For inop ALS, increase LP and LNAV Cats C/D visibility to 1 3/8 SM.</p>				
ATIS <b>125.175</b>	POTOMAC APP CON <b>128.525 306.925</b>	MANASSAS TOWER ★ <b>133.1 (CTAF) 360.75</b>	GND CON <b>121.8</b>	CLNC DEL <b>120.2</b>



NE-3, 03 OCT 2024 to 31 OCT 2024

NE-3, 03 OCT 2024 to 31 OCT 2024

ELEV <b>192</b>	TDZE <b>178</b>
-----------------	-----------------



Procedure NA for arrivals at BRV VORTAC on V286 southeast bound.

3000	CSN	HANOK		
<p>CEPTO 2.8 NM to OKILE</p> <p>1 NM to OKILE</p> <p>OKILE</p> <p>326°</p> <p>330°</p> <p>2000</p> <p>3.00° TCH 40</p> <p>1260</p>				
0.5	1 NM	1.8 NM	2.3 NM	5.3 NM
CATEGORY	A	B	C	D
LP MDA	620-1 442 (500-1)			
LNAV MDA	640-1	462 (500-1)	640-1 1/8	462 (500-1 1/8)
CIRCLING	700-1	740-1	840-1 3/4	920-2 1/4
	508 (600-1)	548 (600-1)	648 (700-1 1/4)	728 (800-2 1/4)

(IAF) BROOKE BRV