

WAAS CH <b>99415</b> <b>W09B</b>	APP CRS <b>093°</b>	Rwy Idg TDZE Apt Elev	<b>5003</b> <b>8</b> <b>10</b>
--	------------------------	-----------------------------	--------------------------------------

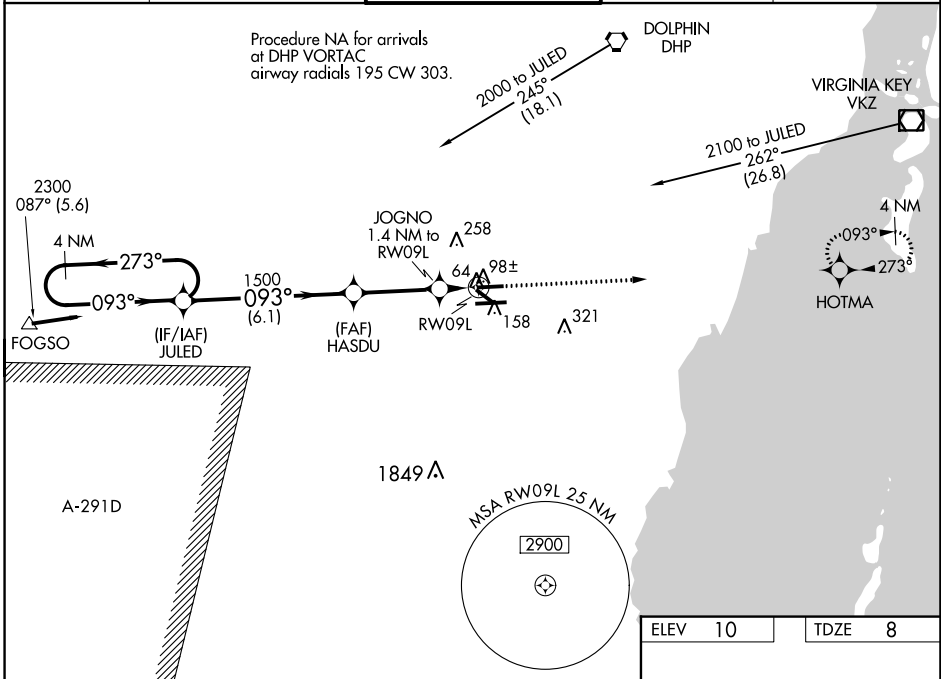
# RNAV (GPS) RWY 9L

MIAMI EXEC (TMB)

**▼** Circling Rwy 13,31 NA at night. Baro-VNAV NA when using Miami Intl altimeter setting.  
**▲** For uncompensated Baro-VNAV systems, procedure NA below -15°C (5°F) or above 48°C (118°F). DME/DME RNP-0.3 NA. When local altimeter setting not received, use Miami Intl altimeter setting and increase all DA 27 feet and all MDA 40 feet; increase LPV all Cats visibility ¼ mile, LNAV Cat C visibility ¼ mile, and Circling Cat D visibility ¼ mile.

MISSED APPROACH: Climb to 2000 direct HOTMA and hold.

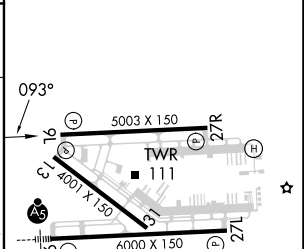
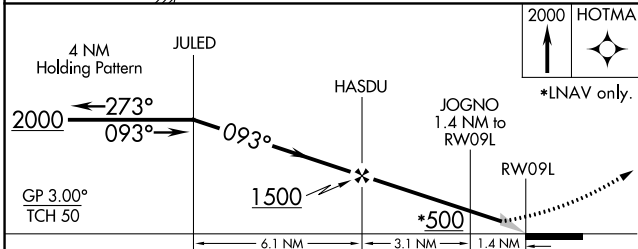
ATIS <b>124.0</b>	MIAMI APP CON <b>125.5 354.1</b>	MIAMI EXEC TOWER* <b>118.9 (CTAF) 0</b>	GND CON <b>121.7</b>	CLNC DEL <b>133.0</b>
----------------------	-------------------------------------	--	-------------------------	--------------------------



SE-3, 03 OCT 2024 to 31 OCT 2024

SE-3, 03 OCT 2024 to 31 OCT 2024

ELEV 10	TDZE 8
---------	--------



CATEGORY	A	B	C	D
LPV DA		258-¾	250 (300-¾)	
LNAV/VNAV DA		364-1¼	356 (400-1¼)	
LNAV MDA	380-1	372 (400-1)		380-1¼ 372 (400-1¼)
CIRCLING	460-1 450 (500-1)	560-1 550 (600-1)	640-1¾ 630 (700-1¾)	640-2 630 (700-2)

REIL Rwy 13  
 HIRL Rwy 9R-27L 0  
 MIRL Rwy 9L-27R  
 MIRL Rwy 13-31 0