


|   |                        |   |
|---|------------------------|---|
| LOC/DME I-HDR<br><b>111.5</b><br>Chan <b>52</b> | APP CRS<br><b>316°</b> | Rwy Idg <b>4600</b><br>TDZE <b>922</b><br>Apt Elev <b>934</b> |
|---|------------------------|---|

# ILS or LOC RWY 31

BARROW COUNTY (WDR)

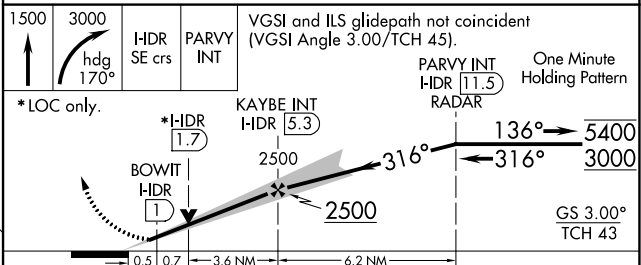
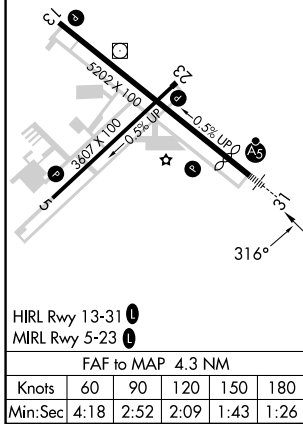
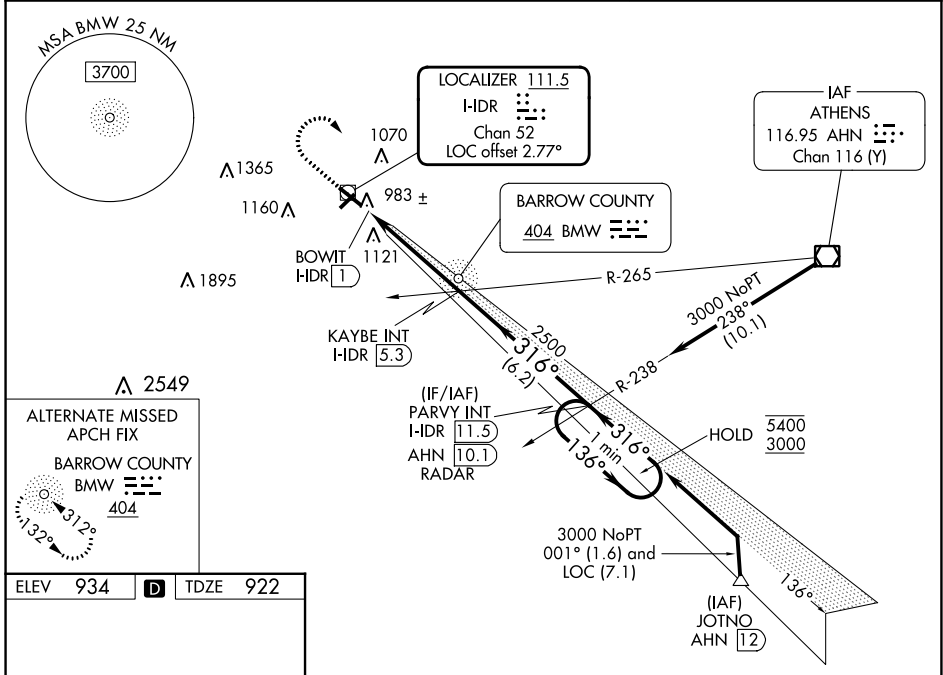
DME or RADAR required for procedure entry.

**⚠** Rwy 31 helicopter visibility reduction below 3/4 SM NA. Inop table does not apply to S-ILS 31. For inop ALS, increase S-LOC 31 all Cats visibility to 1 SM. Circling Rwy 13, 23 NA at night.

**MALSR** 

**MISSED APPROACH:** Climb to 1500 then climbing right turn to 3000 via heading 170° and I-HDR SE course to PARVY INT/I-HDR 11.5 DME/RADAR and hold.

|                          |   |                                 |
|--------------------------|---|---------------------------------|
| AWOS-3<br><b>118.575</b> | ATLANTA APP CON ★<br><b>132.475 291.1</b> | UNICOM<br><b>123.0 (CTAF) 0</b> |
|--------------------------|---|---------------------------------|



|          |             |             |               |                 |
|----------|-------------|-------------|---------------|-----------------|
| CATEGORY | A           | B           | C             | D               |
| S-ILS 31 |             | 1172-3/4    | 250 (300-3/4) |                 |
| S-LOC 31 |             | 1300-3/4    | 378 (400-3/4) |                 |
| CIRCLING | 1400-1      | 1580-1      | 1660-2        | 1660-2 1/4      |
|          | 466 (500-1) | 646 (700-1) | 726 (800-2)   | 726 (800-2 1/4) |

SE-4, 03 OCT 2024 to 31 OCT 2024

SE-4, 03 OCT 2024 to 31 OCT 2024