

LOC/DME I- <b>UZA</b>	APP CRS	Rwy Idg	<b>5500</b>
<b>108.5</b>	<b>016°</b>	TDZE	<b>666</b>
Chan <b>22</b>		Apt Elev	<b>666</b>

# ILS Z or LOC Z RWY 2

ROCK HILL/YORK COUNTY/BRYANT FLD (UZA)

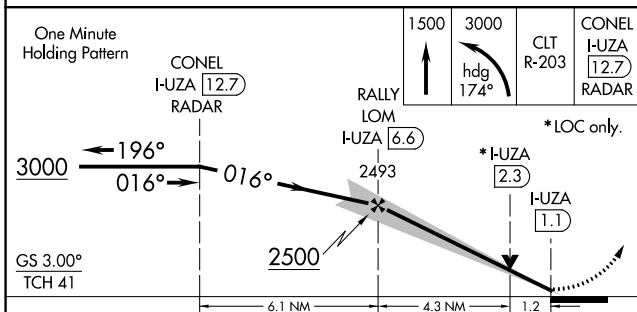
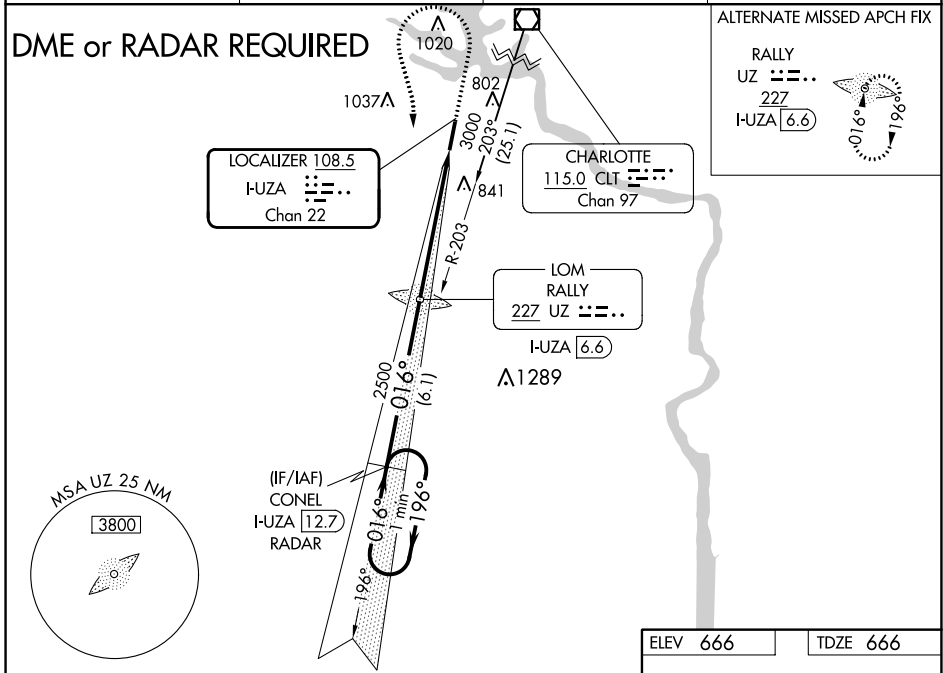
**NA** ADF or DME required. VDP NA with Charlotte/Douglas Intl altimeter setting. When local altimeter setting not received, use Charlotte/Douglas Intl altimeter setting and increase all DA 45 feet and all MDA 60 feet. Increase S-LOC 2 Cat C/D visibility 1/4 mile. For inop MALSRL, increase S-LOC 2 Cat C/D visibility to 1 1/8 mile. For inop MALSRL, when using Charlotte/Douglas Intl altimeter setting, increase S-LOC 2 Cat C/D visibility to 1 1/8 mile.

MALSRL

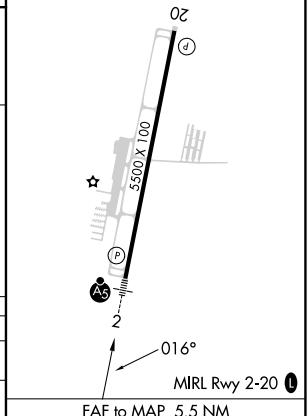


MISSED APPROACH: Climb to 1500 then climbing left turn to 3000 on heading 174° and CLT VOR/DME R-203 to CONEL/I-**UZA** 12.7 DME/RADAR and hold.

ASOS <b>120.775</b>	CHARLOTTE APP CON <b>120.05 307.8</b>	GCO <b>121.725</b>	UNICOM <b>123.05 (CTAF)</b>
------------------------	--	-----------------------	--------------------------------



ELEV 666	TDZE 666
----------	----------



CATEGORY	A	B	C	D
S-ILS 2		866-1/2	200 (200-1/2)	
S-LOC 2	1080-1/2	414 (500-1/2)	1080-3/4	414 (500-3/4)
<b>C</b> CIRCLING	1140-1 474 (500-1)	1160-1 494 (500-1)	1340-2 674 (700-2)	1340-2 1/4 674 (700-2 1/4)

Knots	60	90	120	150	180
Min:Sec	5:30	3:40	2:45	2:12	1:50

# ILS Z or LOC Z RWY 2

SE-2, 03 OCT 2024 to 31 OCT 2024

SE-2, 03 OCT 2024 to 31 OCT 2024