

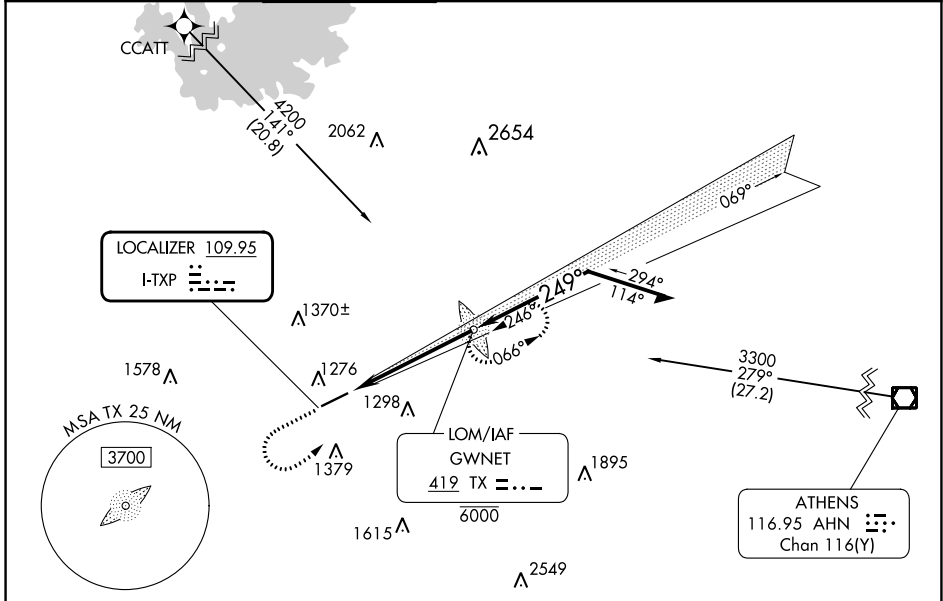
LOC I-TXP 109.95	APP CRS 249°	Rwy Idg TDZE Apt Elev 6001 1039 1062
----------------------------	------------------------	--

ILS or LOC RWY 25

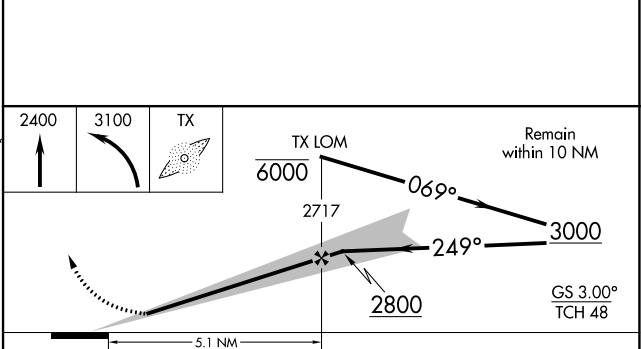
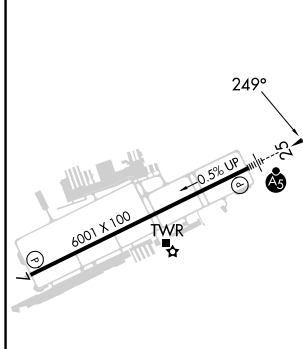
GWINNETT COUNTY/BRISCOE FLD (LZU)

From CCATT: RNAV 1-GPS required.		MISSED APPROACH: Climb to 2400 then climbing left turn to 3100 direct GWNET LOM and hold.
ADF required.		
Autopilot coupled approach NA below 1700. Inop table does not apply to S-ILS 25.		

ATIS 132.275	ATLANTA APP CON 126.975 239.275	GWINNETT TOWER * 124.1 (CTAF)	GND CON 121.8	CLNC DEL 121.8	CLNC DEL 134.0 (When twr closed)	UNICOM 123.05
------------------------	---	---	-------------------------	--------------------------	---	-------------------------



ELEV 1062	TDZE 1039
-----------	-----------



HIRL Rwy 7-25					
FAF to MAP 5.1 NM					
Knots	60	90	120	150	180
Min:Sec	5:06	3:24	2:33	2:02	1:42
CIRCLING	1640-1	578 (600-1)	1680-1 1/4 618 (700-1 3/4)	1700-2 638 (700-2)	

SE-4, 03 OCT 2024 to 31 OCT 2024

SE-4, 03 OCT 2024 to 31 OCT 2024