

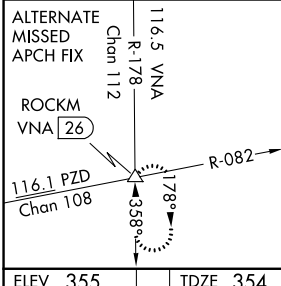
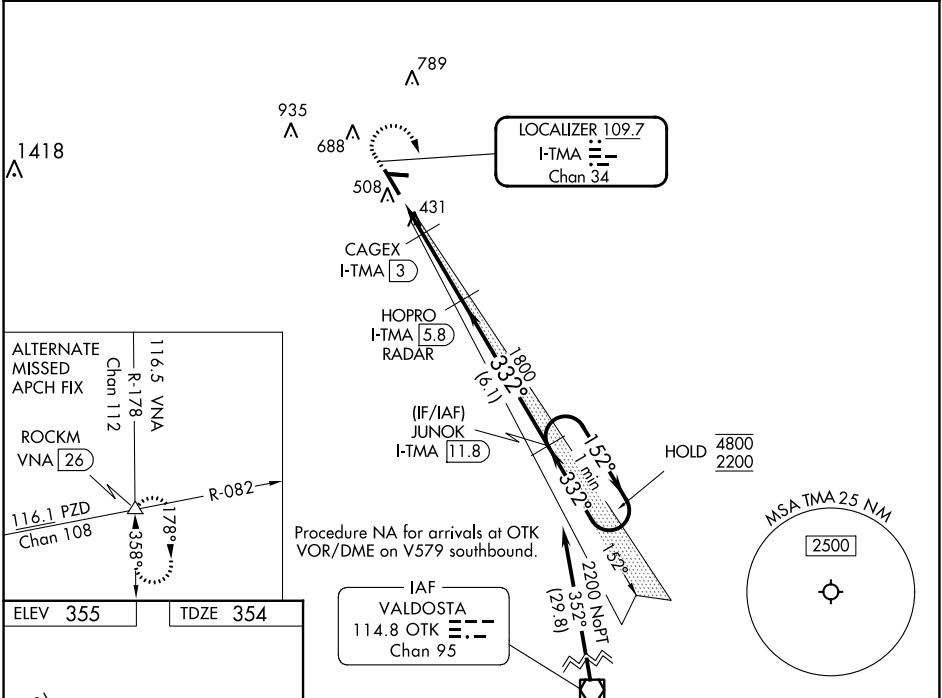
LOC/DME I-TMA <b>109.7</b> Chan <b>34</b>	APP CRS <b>332°</b>	Rwy Idg <b>6506</b> TDZE <b>354</b> Apt Elev <b>355</b>
---	------------------------	---

# ILS or LOC RWY 34

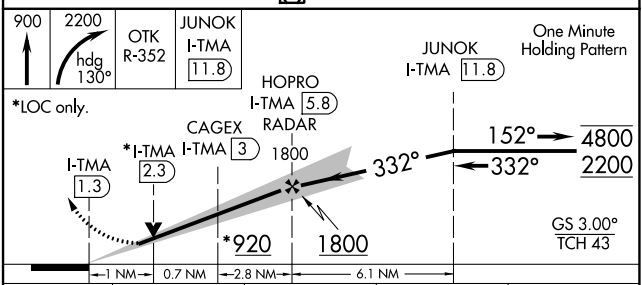
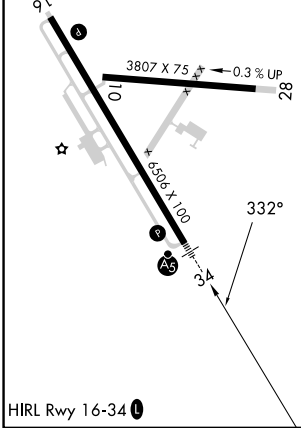
HENRY TIFT MYERS (TMA)

DME required.	MALSR 	MISSED APPROACH: Climb to 900 then climbing right turn to 2200 on heading 130° and OTK VOR/DME R-352 to JUNOK/I-TMA 11.8 DME and hold.
Circling Rwy 10 NA at night. Rwy 34 helicopter visibility reduction below 3/4 SM NA. For inop ALS, increase S-ILS 34 visibility all Cats to 7/8 SM and increase S-LOC 34 visibility all Cats to 1 SM.		

AWOS-3PT <b>118.525</b>	VALDOSTA APP CON ★ <b>126.6 285.6</b>	UNICOM <b>122.7 (CTAF) 0</b>
----------------------------	--	---------------------------------



ELEV 355	TDZE 354
----------	----------



CATEGORY	A	B	C	D
S-ILS 34		623-3/4	269 (300-3/4)	
S-LOC 34		700-3/4	346 (400-3/4)	
CIRCLING	920-1 565 (600-1)	1060-1 705 (800-1)	1060-2 705 (800-2)	1240-3 885 (900-3)

SE-4, 03 OCT 2024 to 31 OCT 2024

SE-4, 03 OCT 2024 to 31 OCT 2024