

WAAS CH 62839 W16A	APP CRS 152°	Rwy Idg TDZE Apt Elev	6506 355 355
--	------------------------	-----------------------------	---

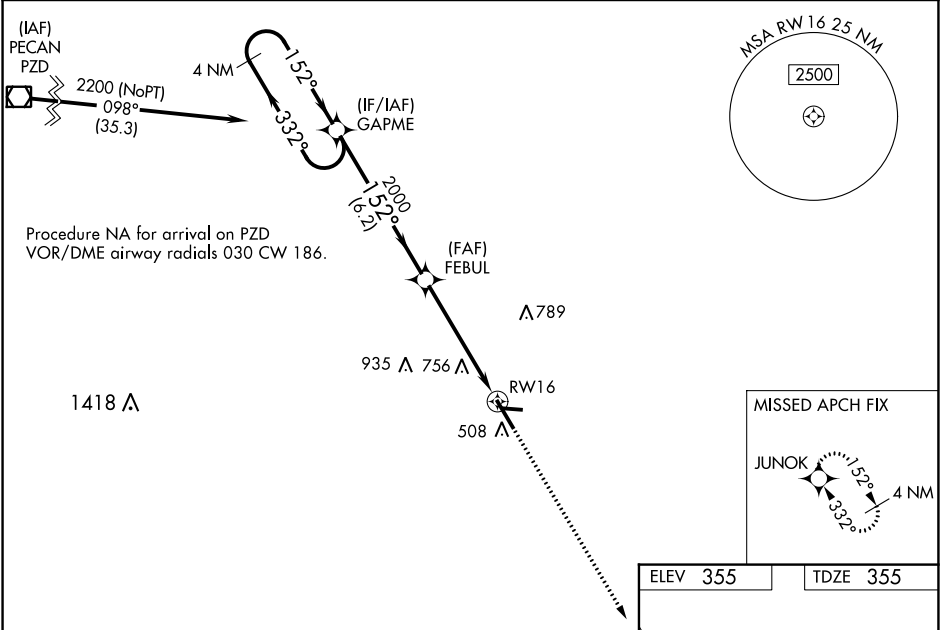
RNAV (GPS) RWY 16

HENRY TIFT MYERS (TMA)

⚠ For uncompensated Baro-VNAV systems, LNAV/VNAV NA below -1.5°C (5°F) or above 54°C (130°F). Circling Rwy 10 NA at night. DME/DME RNP-0.3 NA. Rwy 16 Helicopter visibility reduction below 3/4 SM NA.

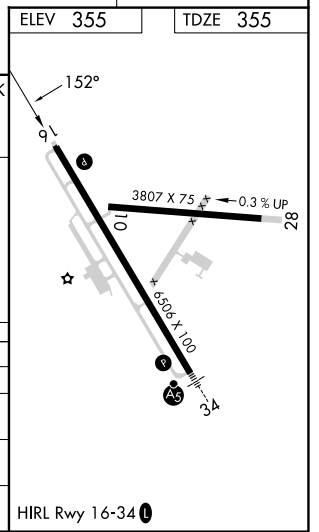
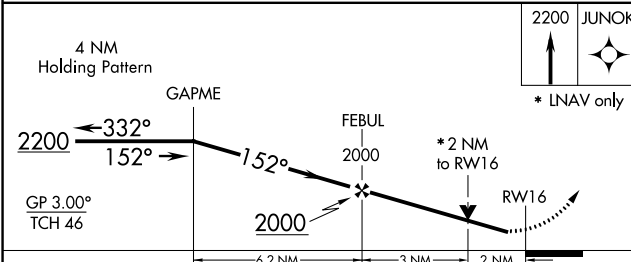
MISSED APPROACH:
Climb to 2200 direct JUNOK and hold.

AWOS-3PT 118.525	VALDOSTA APP CON★ 126.6 285.6	UNICOM 122.7 (CTAF) 0
----------------------------	---	---------------------------------



SE-4, 03 OCT 2024 to 31 OCT 2024

SE-4, 03 OCT 2024 to 31 OCT 2024



CATEGORY	A	B	C	D
LPV DA		621-7/8	266 (300-7/8)	
LNAV/VNAV DA		1100-3	745 (800-3)	
LNAV MDA	1020-1	665 (700-1)	1020-17/8	665 (700-17/8)
C CIRCLING	1020-1 665 (700-1)	1060-1 705 (800-1)	1060-2 705 (800-2)	1240-3 885 (900-3)