

ATIS
 128.375
 CLNC DEL
 119.45
 GND CON
 121.8 239.0
 HOOKS TOWER*
 127.4 354.1 (EAST)
 118.4 (CTAF) 354.1 (WEST)
 HOUSTON DEP CON
 119.7 281.4

**TOP ALTITUDE:
 ASSIGNED BY ATC**

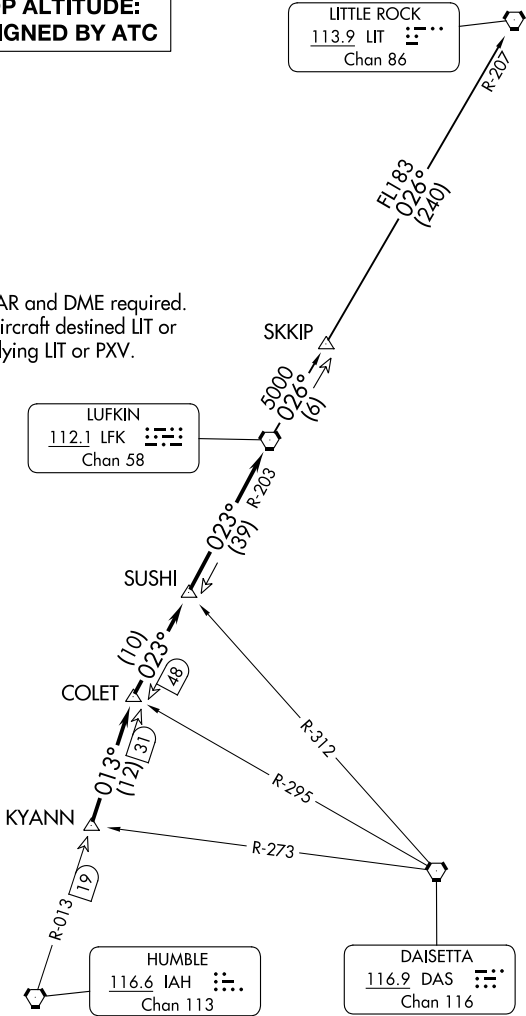
LITTLE ROCK
 113.9 LIT
 Chan 86

NOTE: RADAR and DME required.
 NOTE: For aircraft destined LIT or
 overflying LIT or PXV.

LUFKIN
 112.1 LFK
 Chan 58

DAISETTA
 116.9 DAS
 Chan 116

HUMBLE
 116.6 IAH
 Chan 113



TAKEOFF MINIMUMS

Rwys 17L, 35R: NA - Environmental.
 Waterways 17, 35: NA - Air Traffic.
 Rwys 17R, 35L: Standard.

NOTE: Chart not to scale.

(CONTINUED ON FOLLOWING PAGE)

SC-5, 03 OCT 2024 to 31 OCT 2024

SC-5, 03 OCT 2024 to 31 OCT 2024