

STRYA EIGHT DEPARTURE (RNAV)

HOUSTON, TEXAS

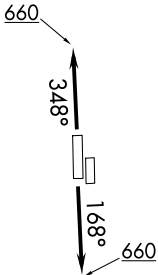
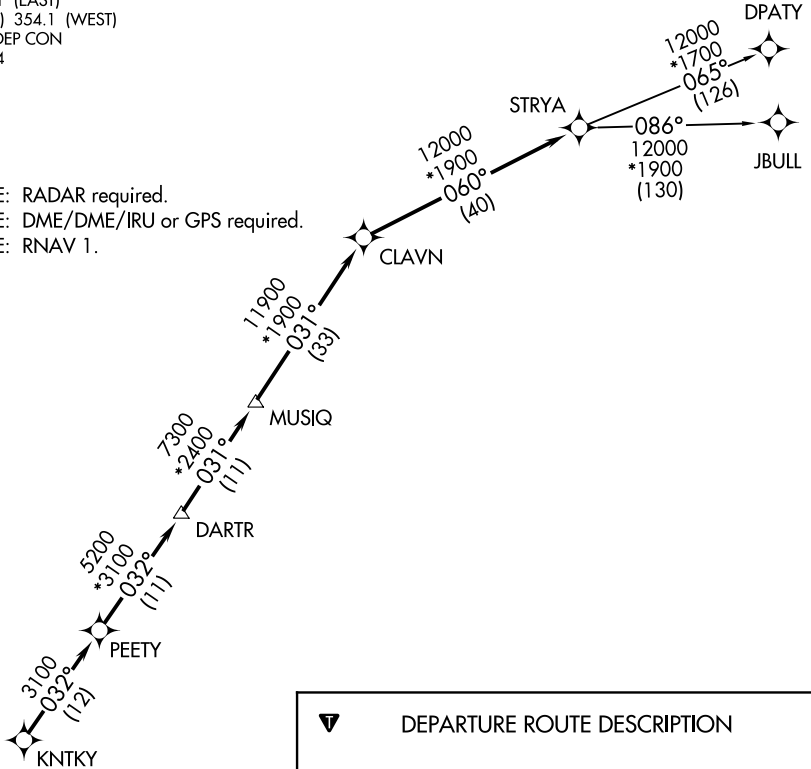
TOP ALTITUDE: ASSIGNED BY ATC

ATIS
 128.375
 CLNC DEL
 119.45
 GND CON
 121.8 239.0
 HOOKS TOWER*
 127.4 354.1 (EAST)
 118.4 (CTAF) 354.1 (WEST)
 HOUSTON DEP CON
 119.7 281.4

TAKEOFF MINIMUMS

Rwy's 17L, 35R: NA-Environmental.
 Waterway 17, 35: NA-Air Traffic.
 Rwy's 17R, 35L: Standard with minimum climb of 500' per NM to 660.

NOTE: RADAR required.
 NOTE: DME/DME/IRU or GPS required.
 NOTE: RNAV 1.



NOTE: Chart not to scale.



DEPARTURE ROUTE DESCRIPTION

TAKEOFF RUNWAY 17R: Climb on heading 168° to 660 for RADAR vectors to KNTKY, thence. . . .

TAKEOFF RUNWAY 35L: Climb on heading 348° to 660 for RADAR vectors to KNTKY, thence. . . .

. . . .on track 032° to PEETY, then on track 032° to DARTR, then on track 031° to MUSIQ, then on track 031° to CLAVN, then on track 060° to STRYA, then on (transition). Maintain ATC assigned altitude. Expect filed altitude 10 minutes after departure.

DPATY TRANSITION (STRYA8.DPATY)

JBULL TRANSITION (STRYA8.JBULL)

STRYA EIGHT DEPARTURE (RNAV)

HOUSTON, TEXAS