

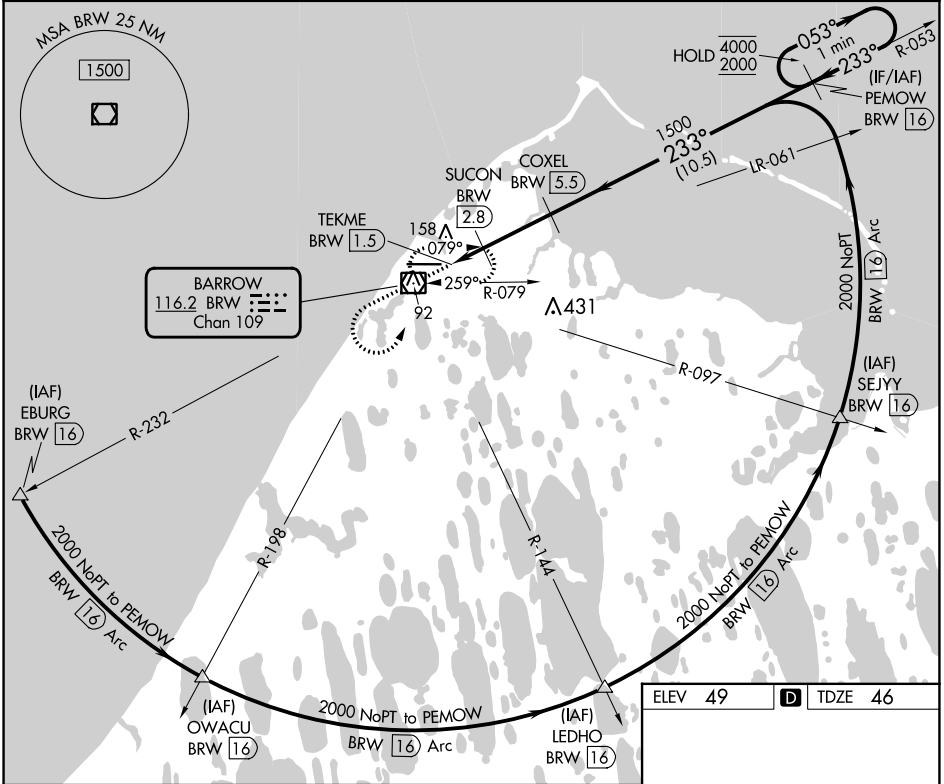
VOR/DME BRW 116.2 Chan 109	APP CRS 233°	Rwy Idg TDZE Apt Elev	5900 46 49
--	------------------------	-----------------------------	---------------------------------------

VOR RWY 26

WILEY POST-WILL ROGERS MEML (BRW)(PABR)

DME required.	MISSED APPROACH: Climb to 1600 then climbing left turn to 2000 direct BRW VOR/DME and hold, continue climb-in-hold to 2000.
<p>Circling NA for Cat A north of Rwy 8-26.</p>	

AFIS 132.15	ANCHORAGE CENTER 135.3 239.25	BARROW RADIO 123.6 (CTAF) 0
-----------------------	---	---------------------------------------



AK, 05 SEP 2024 to 31 OCT 2024

AK, 05 SEP 2024 to 31 OCT 2024

1600	2000	BRW	
TEKME BRW 1.5	SUCON BRW 2.1	COXEL BRW 5.5	PEMOW BRW 16
One Minute Holding Pattern			
540		1500	4000
233°		233°	053°
3.01° TCH 50			
0.4	0.6	0.7	2.7 NM
10.5 NM			
CATEGORY	A	B	C
S-26	420-1	374 (400-1)	
CIRCLING	420-1 371 (400-1)	500-1 451 (500-1)	500-1½ 451 (500-1½)
		680-2 631 (700-2)	

ELEV 49		TDZE 46
---------	--	---------

REIL Rwy 26

HIRL Rwy 8-26

VOR RWY 26