

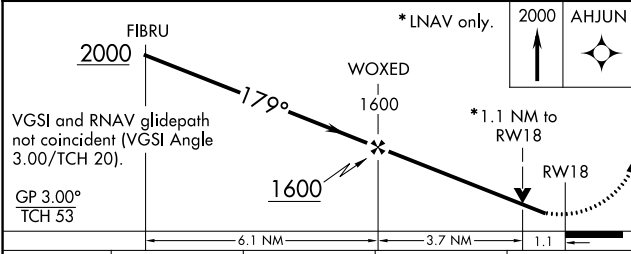
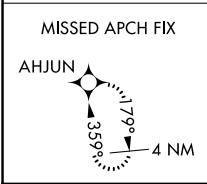
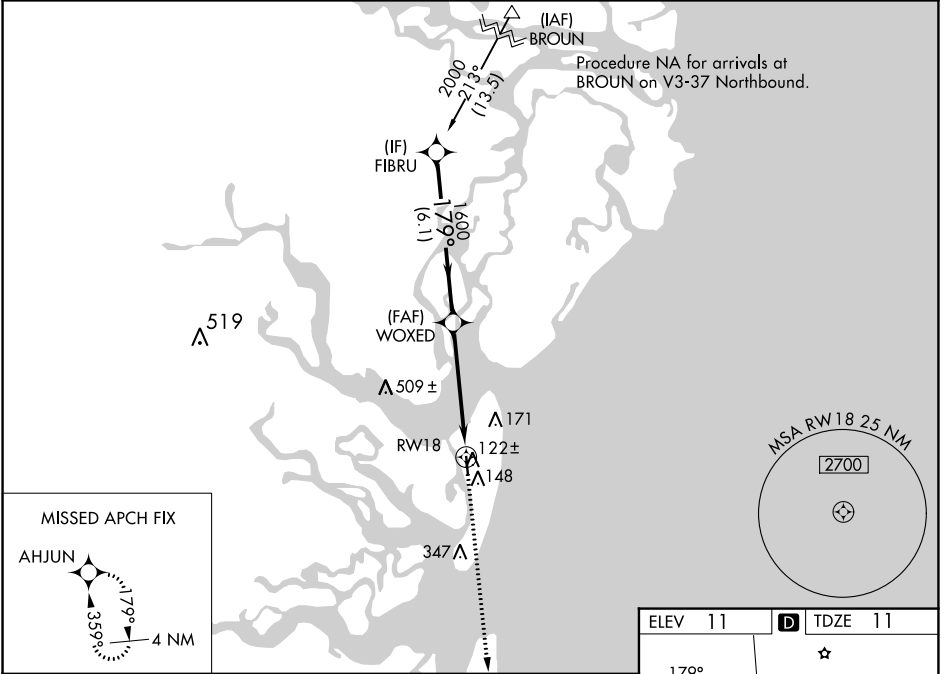
WAAS CH <b>61222</b> <b>W18A</b>	APP CRS <b>179°</b>	Rwy Idg <b>3575</b> TDZE <b>11</b> Apt Elev <b>11</b>
--	------------------------	---

# RNAV (GPS) RWY 18

JEKYLL ISLAND (Ø9J)

RNP APCH	<p>⚠ NA Circling Rwy 36 NA at night. Baro-VNAV NA. Use St Simons Island altimeter setting, when not received use Jacksonville Intl altimeter setting; increase LPV DA to 324 feet and LNAV/VNAV DA to 377 feet and all visibilities 1/2 SM; increase all MDAs 100 feet.</p>	MISSED APPROACH: Climb to 2000 direct AHJUN and hold.
----------	---	---

SSI AWOS-3PT <b>120.025</b>	JACKSONVILLE CENTER <b>126.75 277.4</b>	UNICOM <b>123.05 (CTAF) Ø</b>
--------------------------------	--	----------------------------------



ELEV 11	TDZE 11
MIRL Rwy 18-36 Ø	

CATEGORY	A	B	C	D
LPV DA	224-3/4	213 (300-3/4)		NA
LNAV/VNAV DA	277-7/8	266 (300-7/8)		NA
LNAV MDA	400-1	389 (400-1)		NA
CIRCLING	540-1	529 (600-1)		NA

SE-4, 03 OCT 2024 to 31 OCT 2024

SE-4, 03 OCT 2024 to 31 OCT 2024