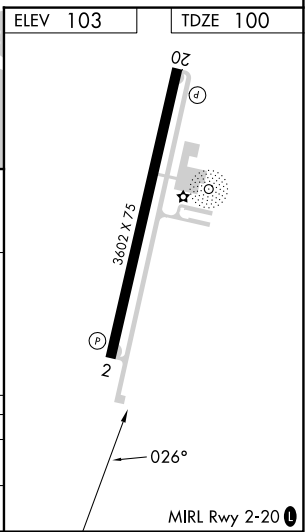
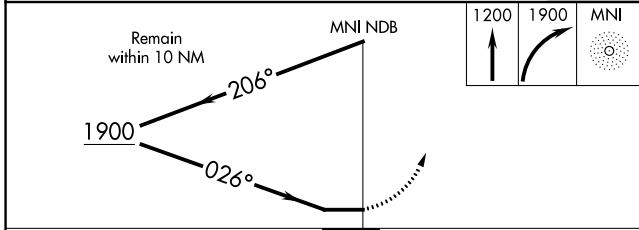
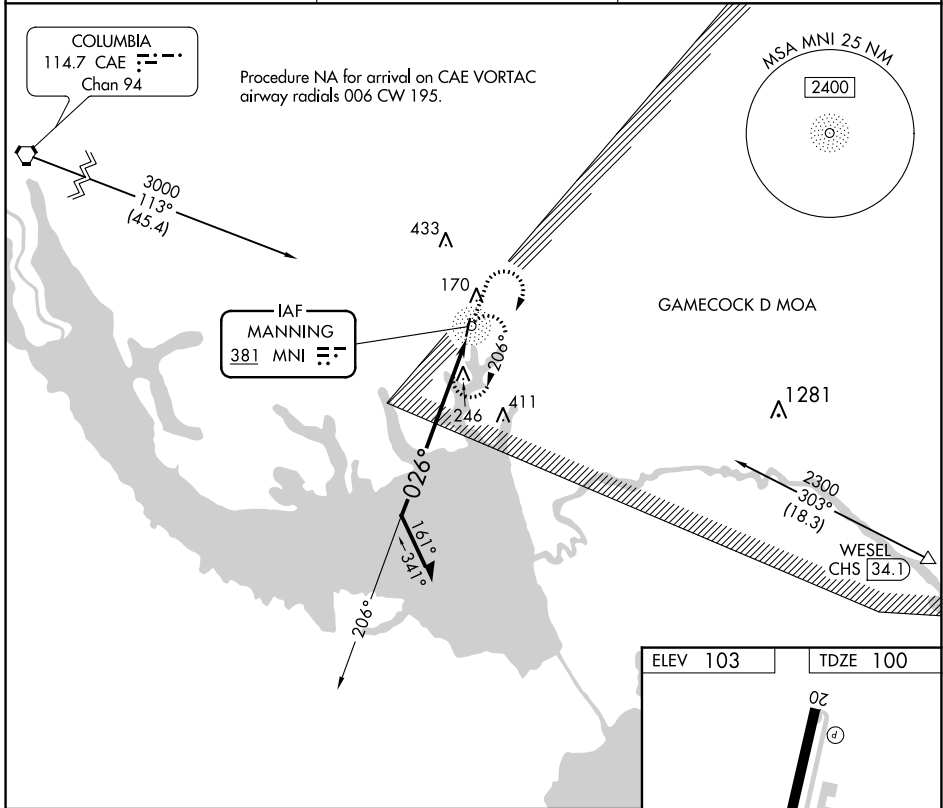


NDB MNI <b>381</b>	APP CRS <b>026°</b>	Rwy Idg <b>3602</b> TDZE <b>100</b> Apt Elev <b>103</b>
-----------------------	------------------------	---

**NDB RWY 2**  
SANTEE COOPER RGNL (MNI)

<p>▼ <b>NA</b> Rwy 2 helicopter visibility reduction below 1 SM NA. Procedure NA at night.</p>	<p>MISSED APPROACH: Climb to 1200, then climbing right turn to 1900 direct MNI NDB and hold, continue climb-in-hold to 1900.</p>
--	--

<p>AWOS-3 <b>120.175</b></p>	<p>SHAW APP CON★ <b>125.4 318.1</b></p>	<p>UNICOM <b>122.8 (CTAF) 0</b></p>
----------------------------------	---	---



CATEGORY	A	B	C	D
S-2	660-1	560 (600-1)	660-1 $\frac{3}{8}$	560 (600-1 $\frac{3}{8}$ )
◻ CIRCLING	660-1	557 (600-1)	800-2 697 (700-2)	800-2 $\frac{1}{4}$ 697 (700-2 $\frac{1}{4}$ )

SE-2, 03 OCT 2024 to 31 OCT 2024

SE-2, 03 OCT 2024 to 31 OCT 2024