

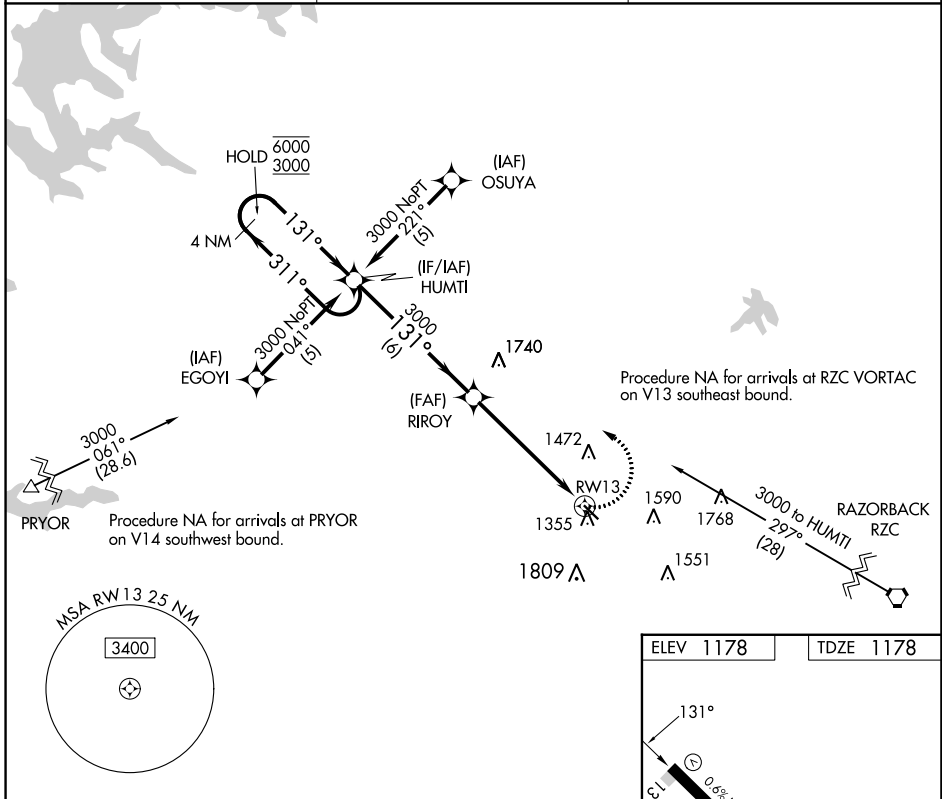
APP CRS <b>131°</b>	Rwy Idg <b>3863</b>
	TDZE <b>1178</b>
	Apt Elev <b>1178</b>

# RNAV (GPS) RWY 13

CRYSTAL LAKE (5M5)

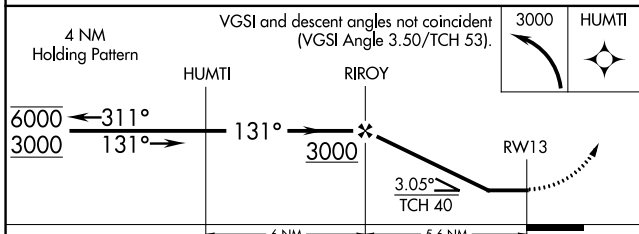
RNP APCH - GPS.	<p>Procedure NA at night. Rwy 13 helicopter visibility reduction below 1 SM NA. Use Northwest Arkansas Nil altimeter setting; if not received, use Joplin Rgnl altimeter setting and increase all MDAs 120 feet and LNAV Cat C and Circling Cat B visibility ¼ SM and Circling Cat C visibility ½ SM. Circling NA for Cat C southwest of Rwy 13-31.</p>	<p>MISSED APPROACH: Climbing left turn to 3000 direct HUMTI and hold.</p>
-----------------	---	---

RAZORBACK APP CON * <b>121.0 244.575</b>	CLNC DEL <b>126.6</b>	UNICOM <b>122.8 (CTAF)</b>
---	--------------------------	-------------------------------

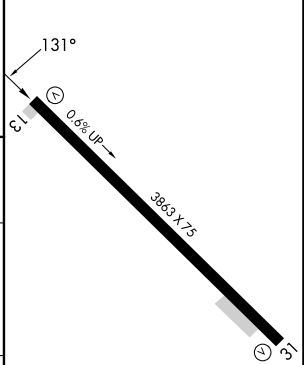


SC-1, 03 OCT 2024 to 31 OCT 2024

SC-1, 03 OCT 2024 to 31 OCT 2024



ELEV 1178	TDZE 1178
-----------	-----------



CATEGORY	A	B	C	D
LNAV MDA	1720-1	542 (600-1)	1720-1 5/8 542 (600-1 5/8)	NA
CIRCLING	1820-1 642 (700-1)	1900-1 722 (800-1)	1940-2 1/4 762 (800-2 1/4)	NA

LURL Rwy 13-31