

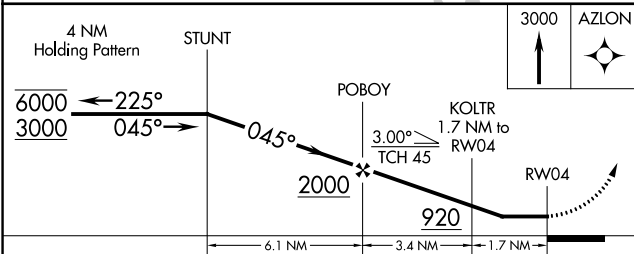
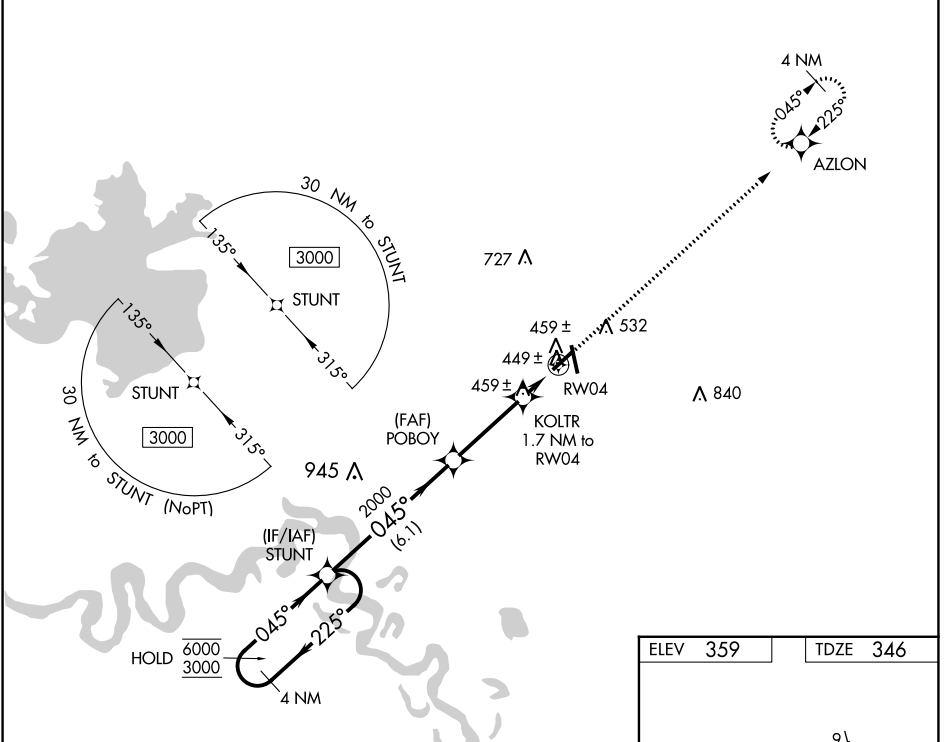
WAAS CH <b>72637</b> <b>W04A</b>	APP CRS <b>045°</b>	Rwy Idg TDZE Apt Elev	<b>4111</b> <b>346</b> <b>359</b>
--	------------------------	-----------------------------	---

# RNAV (GPS) RWY 4

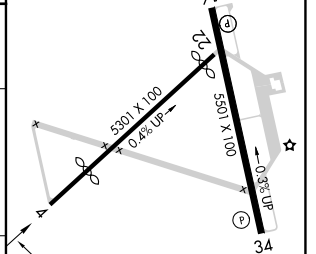
HOPE MUNI (M18)

RNP APCH - GPS.	MISSED APPROACH: Climb to 3000 direct AZLON and hold.
▼ Procedure NA at night. ▲ NA Rwy 4 helicopter visibility reduction below 1 SM NA. Use Texarkana altimeter setting.	

TXK ASOS <b>120.2</b>	FORT WORTH CENTER <b>123.925 269.475</b>	UNICOM <b>122.8 (CTAF) 0</b>
--------------------------	---	---------------------------------



ELEV 359	TDZE 346
----------	----------



CATEGORY	A	B	C	D
LP MDA	760-1	414 (500-1)	760-1 $\frac{1}{8}$	414 (500-1 $\frac{1}{8}$ )
LNAV MDA	780-1	434 (500-1)	780-1 $\frac{1}{4}$	434 (500-1 $\frac{1}{4}$ )
CIRCLING	860-1 501 (600-1)	940-1 581 (600-1)	940-1 $\frac{1}{2}$ 581 (600-1 $\frac{1}{2}$ )	1100-2 $\frac{1}{2}$ 741 (800-2 $\frac{1}{2}$ )

MIRL Rwy 16-34 0	REIL Rws 16 and 34 0
------------------	----------------------

SC-1, 03 OCT 2024 to 31 OCT 2024

SC-1, 03 OCT 2024 to 31 OCT 2024