


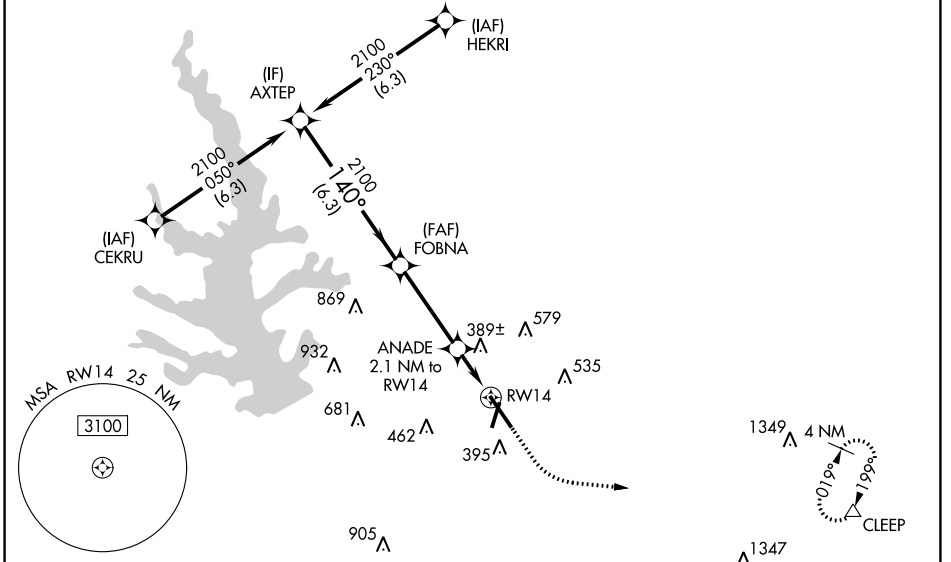
WAAS CH <b>99512</b> <b>W14A</b>	APP CRS <b>140°</b>	Rwy Idg TDZE <b>236</b> Apt Elev <b>245</b>
--	------------------------	---

# RNAV (GPS) RWY 14

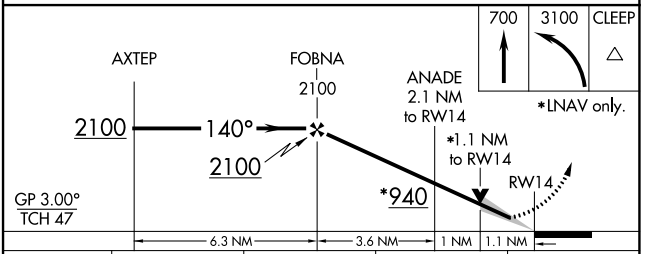
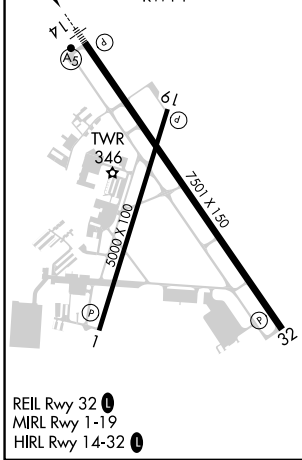
CONROE/NORTH HOUSTON RGNL (C'XO)

<p><b>▽</b> For uncompensated Baro-VNAV systems, LNAV/VNAV NA below -6°C (-22°F) or above 54°C (130°F). DME/DME RNP-0.3 NA.</p> <p><b>▲</b></p>	<p>MALSR</p> 	<p>MISSED APPROACH: Climb to 700 then climbing left turn to 3100 direct CLEEP and hold.</p>
---	--	---

ATIS <b>118.325</b>	HOUSTON APP CON <b>119.7 281.4</b>	CONROE TOWER ★ <b>124.125</b> (CTAF) <b>0</b>	GND CON <b>120.45</b>	CLNC DEL <b>120.45</b>	CLNC DEL <b>119.55</b> (When twr closed)
------------------------	---------------------------------------	--	--------------------------	---------------------------	--



ELEV <b>245</b>	<b>D</b>	TDZE <b>236</b>
-----------------	----------	-----------------



CATEGORY	A	B	C	D
LPV DA		436-½	200 (200-½)	
LNAV/VNAV DA		521-½	285 (300-½)	
LNAV MDA	640-½	404 (400-½)	640-⅝	404 (400-⅝)
<b>C</b> CIRCLING	700-1	455 (500-1)	880-1¾ 635 (700-1¾)	960-2¼ 715 (800-2¼)

SC-5, 03 OCT 2024 to 31 OCT 2024

SC-5, 03 OCT 2024 to 31 OCT 2024